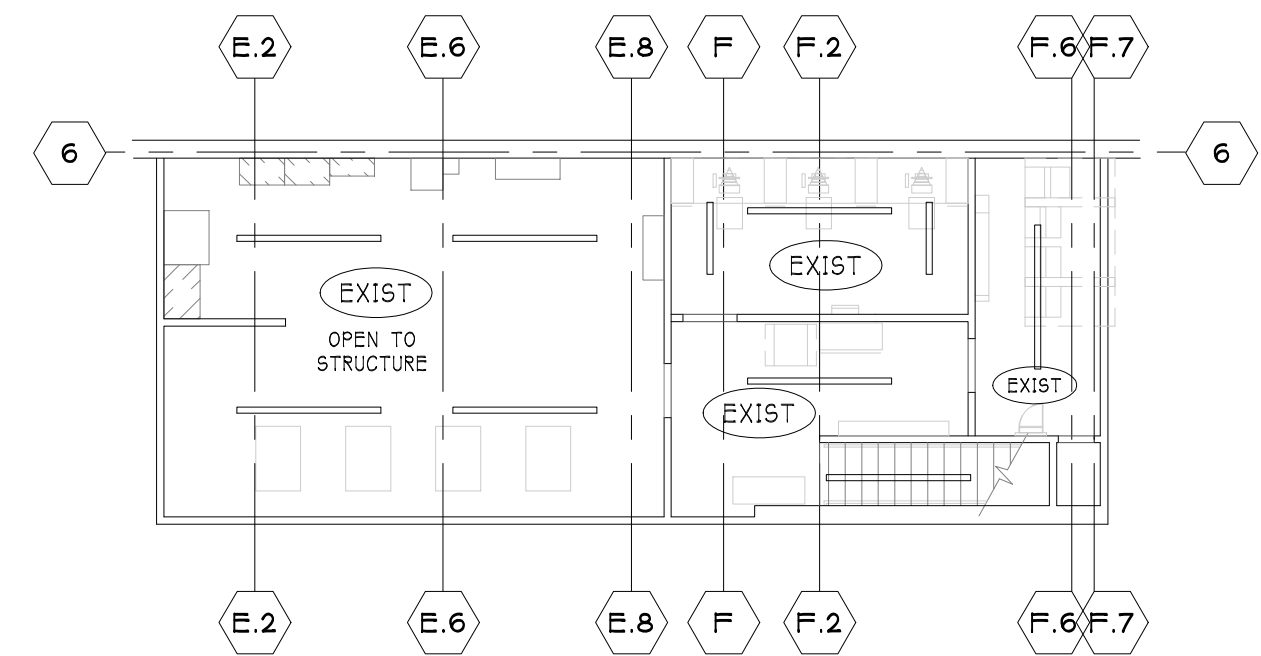


LIGHTING FIXTURE NOTES:

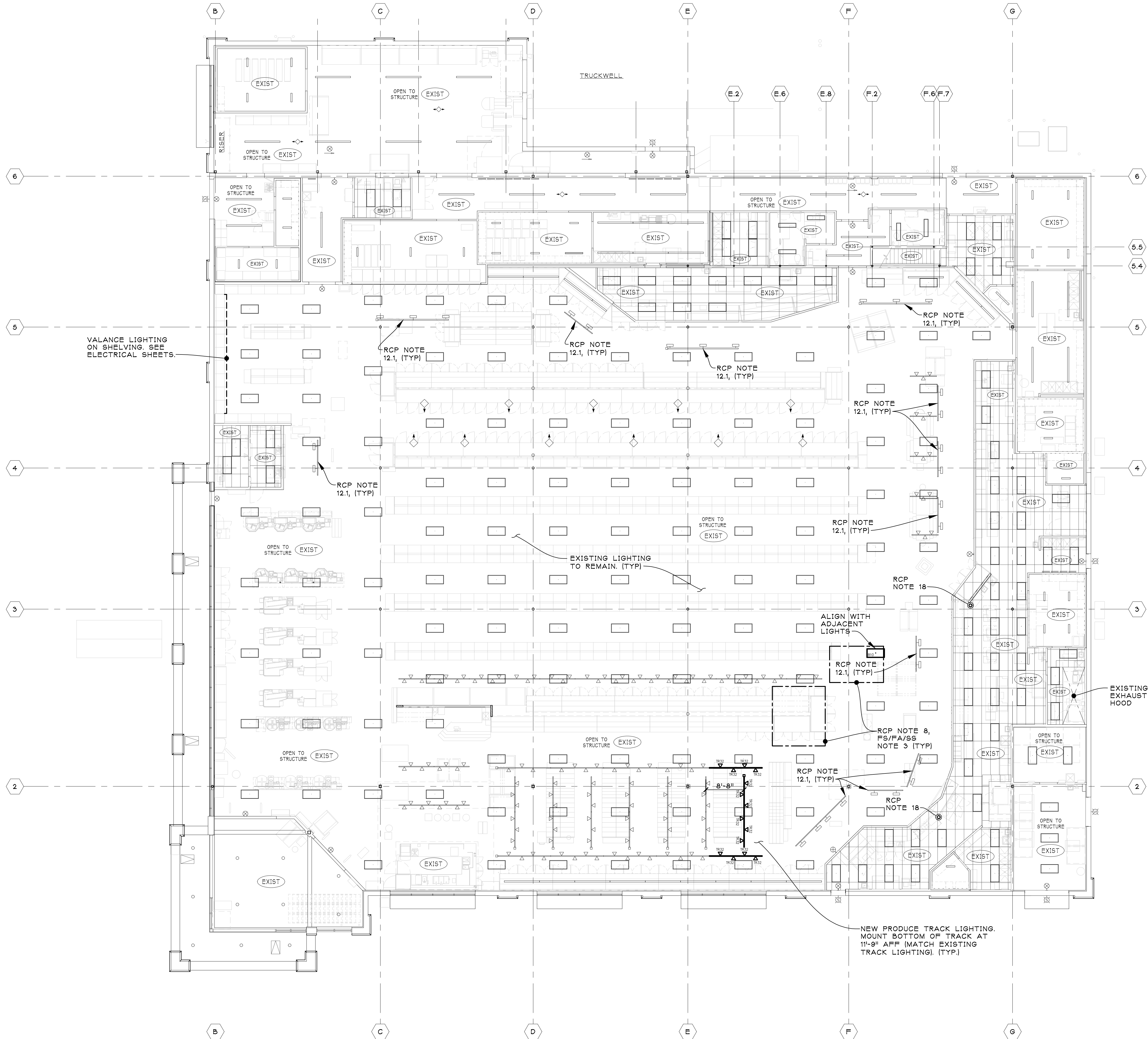
- A. REFER TO THE ELECTRICAL LIGHTING PLAN, E11, FOR FIXTURES AND OTHER ELECTRICAL INFORMATION.
- B. REFER TO THE LIGHTING FIXTURE KEY AND SYMBOL LEGENDS ON SHEETS E0 AND E6.2.5 FOR FIXTURE TYPES AND MOUNTING HEIGHTS.
- C. COORDINATE LIGHT FIXTURES WITH ELECTRICAL DRAWINGS.
- D. PROVIDE NIGHT LIGHT / EMERGENCY LIGHT FIXTURES AS INDICATED ON ELECTRICAL DRAWINGS.
- E. FIXTURES TAGGED AS EXISTING OR RELOCATED ARE EXISTING FIXTURES ON SITE AND MAY NOT MATCH THE KROGER TYPE OR FIXTURE MODEL CALLED OUT IN THE LEGEND.
- F. QUANTITY COUNTS FOR ALL NEW FIXTURES TO BE VERIFIED BY THE ELECTRICAL CONTRACTOR & G.C. PRIOR TO THE KROGER ENGINEER'S ORDER. FIELD VERIFY (FV) ALL EXISTING & RELOCATED LIGHTS TO REMAIN.
- G. PROVIDE UNISTRUT & REQUIRED SUPPORT AROUND DUCTWORK AS NEEDED TO HANG LIGHTS AND OTHER ITEMS. (TYP)
- H. COORDINATE DECOR TRACK LIGHTS (RELOCATE EXISTING) WITH WALL DECOR BY OTHERS.

CEILING PLAN FINISH LEGEND

KEY	DESCRIPTION	DECOR SERIES #700 (ARTISAN LITE DECOR)
EXIST	EXISTING CEILING / AREAS TO REMAIN UNLESS NOTED OTHERWISE. REPLACE DAMAGED, MISSING & MISMATCHED TILES THROUGH OUT THE STORE AS REQD.	
EXIST	EXISTING GRID/TILES. MODIFY / REPAIR GRID AS REQUIRED & REPLACE DAMAGED, MISSING & MISMATCHED TILES (TO MATCH EXISTING)	



MECHANICAL / OFFICE  
**MEZZANINE REFLECTED CEILING PLAN**  
SCALE: 3/32" = 1'-0"



**REFLECTED CEILING PLAN**  
SCALE: 3/32" = 1'-0"

REFLECTED CEILING PLAN GENERAL NOTES:

- SEE MECHANICAL AND ELECTRICAL DRAWINGS FOR ADDITIONAL INFORMATION AND REQUIREMENTS.
- COORDINATE HVAC AND MECHANICAL WITH LIGHTING LAYOUT AND STRUCTURAL LAYOUT.
- REMOVE EXISTING FIXTURES COMPLETE FROM AREAS TO BE DEMOLISHED AS INDICATED ON ELECTRICAL DRAWINGS.
- ALL EXISTING LIGHT FIXTURES TO REMAIN UNLESS NOTED OTHERWISE. SEE ELECTRICAL DRAWINGS FOR ADDITIONAL INFORMATION AND REQUIREMENTS.
- REFER TO ELECTRICAL DRAWINGS TO VERIFY WHICH LIGHT FIXTURES SHALL BE PROVIDED BY KROGER AND INSTALLED BY THE CONTRACTOR.
- COORDINATE WITH ELECTRICAL DRAWINGS FOR LOCATION OF ALL EMERGENCY AND BACKUP LIGHTS.
- G.C. SHALL BE RESPONSIBLE FOR COORDINATION OF ALL MECHANICAL, PLUMBING, REFRIGERATION, ELECTRICAL WITH LOCAL AUTHORITIES HAVING JURISDICTION AND ALL OTHER BUILDING TRADES. CARE SHALL BE TAKEN TO PROTECT EXISTING ITEMS SCHEDULED FOR REUSE.
- EXISTING FIRE SUPPRESSION SYSTEM AND FIRE & SECURITY ALARM SYSTEMS TO REMAIN. MODIFY AS REQUIRED FOR NEW WORK. SEE "FIRE SUPPRESSION, FIRE ALARM & SECURITY SYSTEM NOTES" (FS/FA/SS NOTES) FOR ADDITIONAL INFO.
- ALL NEW AND REWORKED REFRIGERATION LINES, CONDUIT LINES AND MECHANICAL EXPOSED ON THE SALES FLOOR TO BE GROUPED WHERE ABLE.
- PAINT ALL NEW ELECTRICAL FEED FROM CEILING TO TRACK LIGHT, WHITE.
- COORDINATE WITH KROGER PROJECT MANAGER FOR ADDITIONAL DECOR, GRAPHICS AND SIGNAGE INFORMATION. COORDINATE WITH NEW DECOR AND GRAPHICS. SEE DECOR SHEETS BY DFAB.
- ALL LIGHTING FOR DECOR GRAPHICS SHALL BE CENTERED ON GRAPHICS. SEE E50-48 FOR SIMILAR PREP SOFFIT DECOR LIGHTING.
- RELOCATE EXISTING DECOR TRACK LIGHT TO CENTER ON GRAPHICS / SIGN AS NEEDED FOR NEW DECOR. COORDINATE WITH NEW DECOR AND GRAPHICS. SEE DECOR SHEETS BY DFAB.
- NEW CEILING GRID & TILE TO BE CENTERED IN SPACE UNLESS NOTED OTHERWISE.
- AT END OF PROJECT, REMOVE ALL MISCELLANEOUS BALLOONS & DECORATIONS FROM THE CEILING.
- PROVIDE TO THE STORE 10 EXTRA CEILING PANELS OF EACH TYPE USED IN THE STORE FOR MISCELLANEOUS REPAIRS & REPLACEMENT THROUGH OUT THE STORE PRIOR TO GRAND OPENING.
- CLEAN ALL EXISTING (TO REMAIN) CEILING FANS, DIFFUSERS, GRILLES AND ADJACENT CEILING TILES.
- SEE DEMOLITION NOTES ON SHEET AD-01, REGARDING WORK TO BE PERFORMED IN THE CEILING AREAS.
- INSTALL NEW CHASE FOR OVERHEAD REFRIGERATION PIPING. REFER TO RISD-36A ON SHEET RS.1 FOR INSTALLATION DETAILS. COORDINATE WITH SHEET A1.1 AND WITH MECHANICAL/ELECTRICAL/REFRIGERATION TRADES. SEE REFLECTED CEILING PLAN GENERAL NOTE 9 G.C. TO VERIFY FIELD CONDITIONS FOR CONFLICT. MODIFY CEILING AS REQUIRED FOR NEW CHASE AND REFRIGERATION, PLUMBING, ELECTRICAL WORK ABOVE CEILING. PAINT CHASE TO MATCH COLUMNS.
- REMOVE AND REPLACE THE CEILING GRID AND TILES AS REQUIRED TO ACHIEVE ALL REQUIRED STRUCTURAL, MECHANICAL, HVAC, ELECTRICAL, PLUMBING WORK, FIRE SUPPRESSION, REFRIGERATION, LOW VOLTAGE & ANY OTHER WORK IN THE CEILING SPACE. COORDINATE WITH SAID TRADES. SEE MECHANICAL, ELECTRICAL & PLUMBING DRAWINGS FOR ADDITIONAL COORDINATION.

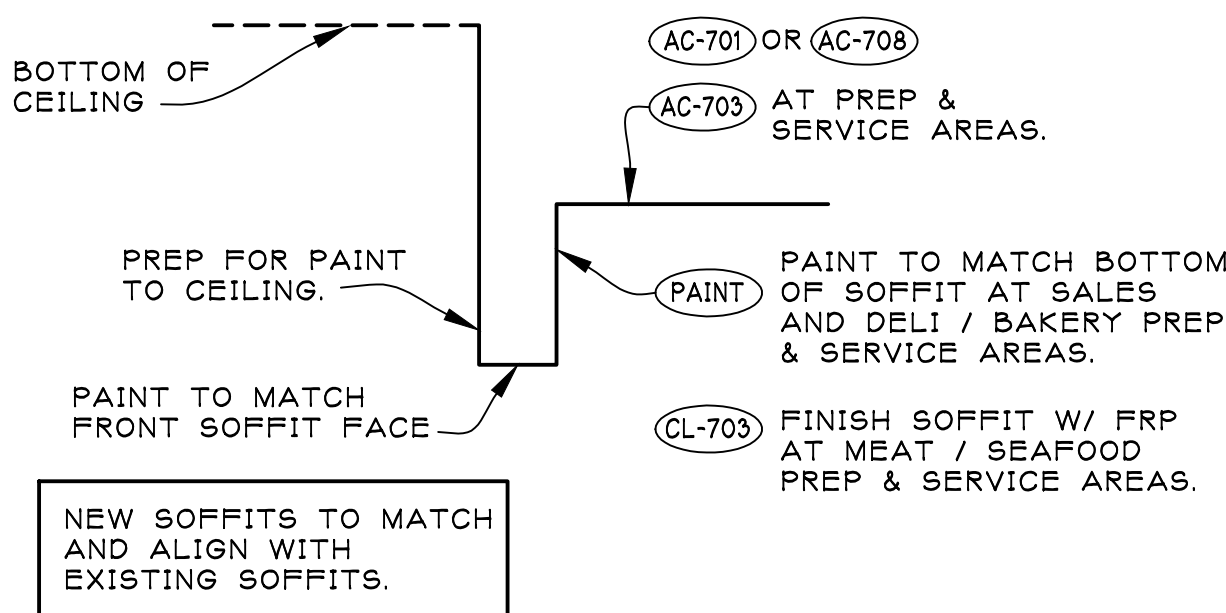
FIRE SUPPRESSION, FIRE ALARM & SECURITY NOTES:

- THE FIRE SUPPRESSION WORK ON THIS PROJECT SHALL BE DESIGN-BUILD AND BE A DEFERRED SUBMITTAL BY G.C. AFTER THE BIDDING PROCESS. THE INTENT IS TO EXTEND AND MODIFY THE EXISTING SYSTEM AS REQUIRED FOR THE CHANGES MADE TO THE STORE. REPAIR AND/OR REPLACE ANY DAMAGED OR MISSING COMPONENTS. PROVIDE ANY ADDITIONAL COMPONENTS FOR THE SYSTEM AS REQUIRED FOR MODIFICATIONS TO THE SYSTEM.
- G.C. SHALL BE RESPONSIBLE FOR COORDINATION OF ALL MECHANICAL, PLUMBING, REFRIGERATION, ELECTRICAL WITH LOCAL AUTHORITIES HAVING JURISDICTION AND ALL OTHER BUILDING TRADES. CARE SHALL BE TAKEN TO PROTECT EXISTING ITEMS SCHEDULED FOR REUSE.
- REWORK EXISTING FIRE SUPPRESSION SYSTEM IN EACH AREA WHERE THE ROOM LAYOUT OR CEILING HAS CHANGED AS REQUIRED TO ACCOMMODATE NEW CONFIGURATION (RAISE OR LOWER HEADS AS REQUIRED). ALL REVISIONS TO THE FIRE SUPPRESSION SYSTEM TO BE TREATED AS A DEFERRED SUBMITTAL BY G.C. REVISION TO BE DESIGNED AND SEALED BY A LICENSED ENGINEER AND MEET ALL RELEVANT STATE AND LOCAL CODES. (ALL WORK/DESIGN/REVISIONS TO BE APPROVED BY KROGER'S UNDERWRITER).
- COORDINATE ALL REQUIRED BACK-FLOW PREVENTION DEVICE MAINTENANCE AGREEMENTS BETWEEN THE OWNER AND THE CITY.
- G.C. AND/OR FIRE SUPPRESSION CONTRACTOR TO FIELD VERIFY THAT THE APPROPRIATE COVERAGE IS PROVIDED IN NEW & EXISTING AREAS (INCLUDING INSIDE & ABOVE COOLERS & FREEZERS).
- THE EXISTING FIRE ALARM SYSTEM SHALL REMAIN FOR THIS STORE. MODIFY SYSTEM AS REQUIRED FOR NEW LAYOUT. FIRE ALARM WORK ON THIS PROJECT SHALL BE DESIGN-BUILD AND BE A DEFERRED SUBMITTAL BY G.C. AFTER THE BIDDING PROCESS.
- THE EXISTING SECURITY SYSTEM (PREMISE ALARM) SHALL REMAIN FOR THIS STORE. MODIFY SYSTEM AS / IF REQUIRED FOR NEW LAYOUT. SECURITY ALARM WORK ON THIS PROJECT SHALL BE DESIGN-BUILD AND BE A DEFERRED SUBMITTAL BY G.C. AFTER THE BIDDING PROCESS.
- SEE SPECIFICATION SECTION 28 10 00 (SECURITY SYSTEMS) AND SECTION 28 46 00 (FIRE ALARM) FOR SYSTEM DESIGN AND REQUIREMENTS.
- G.C. SHALL BE RESPONSIBLE FOR COORDINATION OF ALL MECHANICAL, PLUMBING, REFRIGERATION, ELECTRICAL WITH LOCAL AUTHORITIES HAVING JURISDICTION AND ALL OTHER BUILDING TRADES. CARE SHALL BE TAKEN TO PROTECT EXISTING ITEMS SCHEDULED FOR REUSE.

FINISH LEGEND:

DECOR SERIES #700 (ARTISAN LITE DECOR)

SEE THE JSA CONSTRUCTION DRAWINGS AND PROJECT SPECIFICATIONS. SEE PROJECT SPECIFICATIONS SECTION 01 61 27 "DECOR INTERIOR FINISHES AND COLORS - ARTISAN" FOR INFORMATION ON THE FINISHES AND DECOR. COORDINATE EXTENT OF FINISH AND DECOR WORK WITH DECOR DRAWINGS BY OTHERS AND THE KROGER PROJECT MANAGER.



TYPICAL DROP SOFFIT DETAIL


NO SCALE

SEE DECOR DRAWINGS BY OTHERS FOR ADDITIONAL FINISHES, DECOR, GRAPHICS AND SIGNAGE INFORMATION.

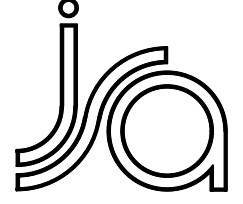
BIDS AND PERMITS  
12/13/2023

ISSUED FOR:  
90% OWNER REVIEW  
10/28/2023

PROPOSED MINOR INTERIOR  
REMODEL FOR:

  
STORE NO. D-361  
425 N CENTER ST  
NORTHVILLE, MI 48167

THE KROGER CO. OF MICHIGAN



**jeffery a.  
scott  
architects p.c.**

32316 grand river ave. suite 200  
farmington, michigan 48336-3261  
(248) 476-8800 fax (248) 476-8833

project no.

23101

sheet no.

A1.3

copyright © 2023