

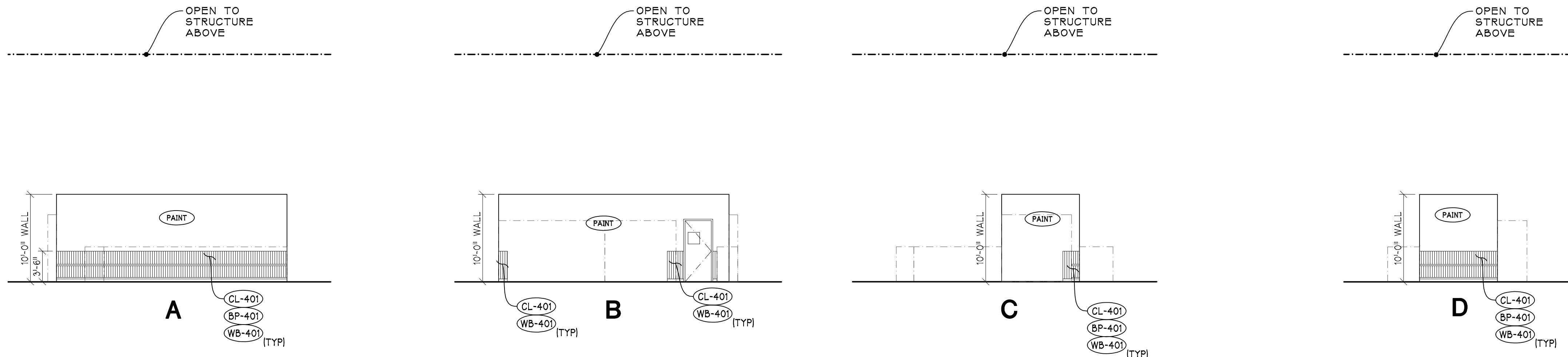
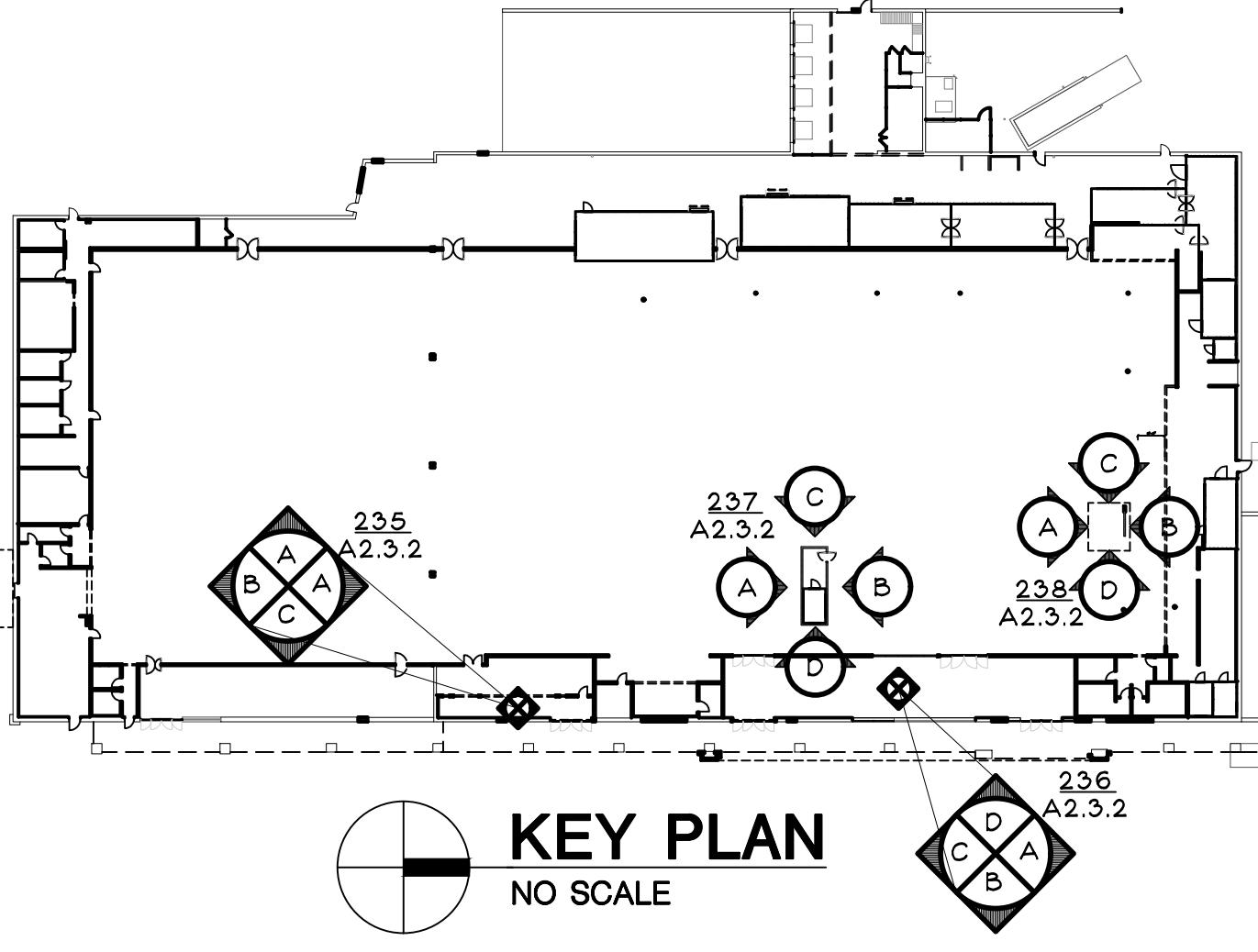
FINISH LEGEND:
DECOR SERIES #400 (FRESH FOR EVERYONE DECOR)

SEE THE JSA CONSTRUCTION DRAWINGS AND PROJECT SPECIFICATIONS. SEE PROJECT SPECIFICATIONS SECTION 01 61 27 "DECOR INTERIOR FINISHES AND COLORS - FRESH FOR EVERYONE" FOR INFORMATION ON THE FINISHES AND DECOR. COORDINATE EXTENT OF FINISH AND DECOR WORK WITH DECOR DRAWINGS BY OTHERS AND THE KROGER PROJECT MANAGER.

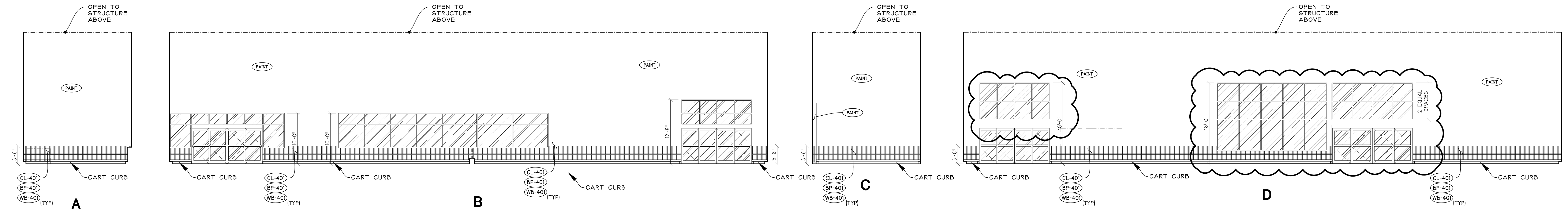
SEE DECOR DRAWINGS BY OTHERS FOR ELEVATION FINISHES & DECOR.

WALLS ABOVE WAINSCOT TO BE PAINTED COORDINATE WITH DECOR DRAWINGS BY OTHERS.

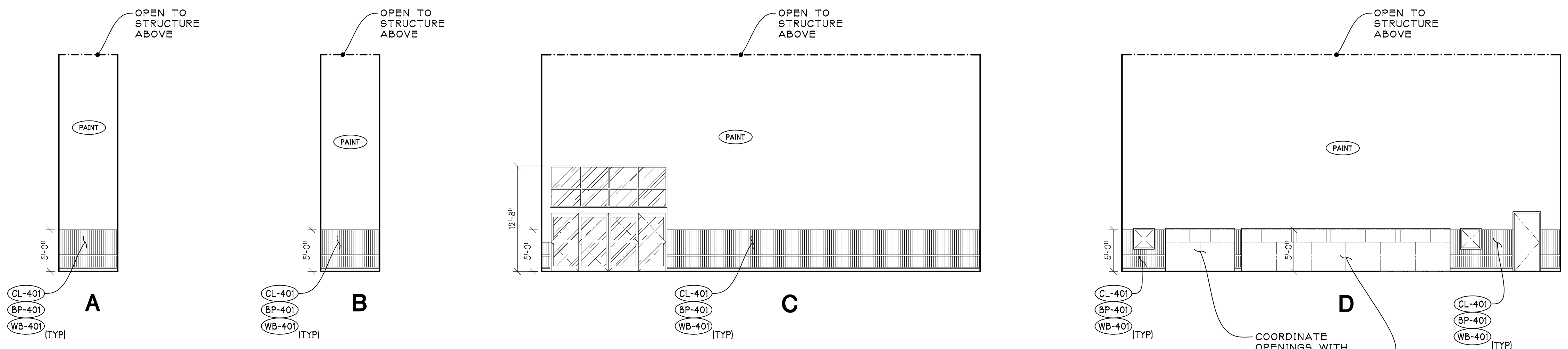
WALLS WITH WAINSCOT TO TYPICALLY RECEIVE TWO BUMPER RAILS CENTER OF BUMPER TO BE AT 5" AFF & 1'-11" AFF. THE CENTER OF BUMPER RAILS IN THE PHARMACY WAITING AREA TO BE 29" AFF.



237 A2.3.2
FLORAL INTERIOR ELEVATIONS
SCALE: 1/8" = 1'-0"



236 A2.3.2
VESTIBULE INTERIOR ELEVATIONS
SCALE: 1/8" = 1'-0"



235 A2.3.2
RECYCLING INTERIOR ELEVATIONS
SCALE: 1/8" = 1'-0"

BULLETIN NO. 7
BIDS AND PERMITS
80% OWNER REVIEW
06/22/2025
02/11/2025
12/18/2024

PROPOSED NEW STORE TAKEOVER FOR:

Kroger

STORE NO. D-416
15100 SILVER PARKWAY
FENTON, MI 48430

THE KROGER CO. OF MICHIGAN

jeffery a. scott architects p.c.

32316 grand river ave. suite 200
farmington, michigan 48336-3261
(248) 476-8800 fax (248) 476-8833

INTERIOR ELEVATIONS

project no. 24108
sheet no. A2.3.2

copyright © 2025