

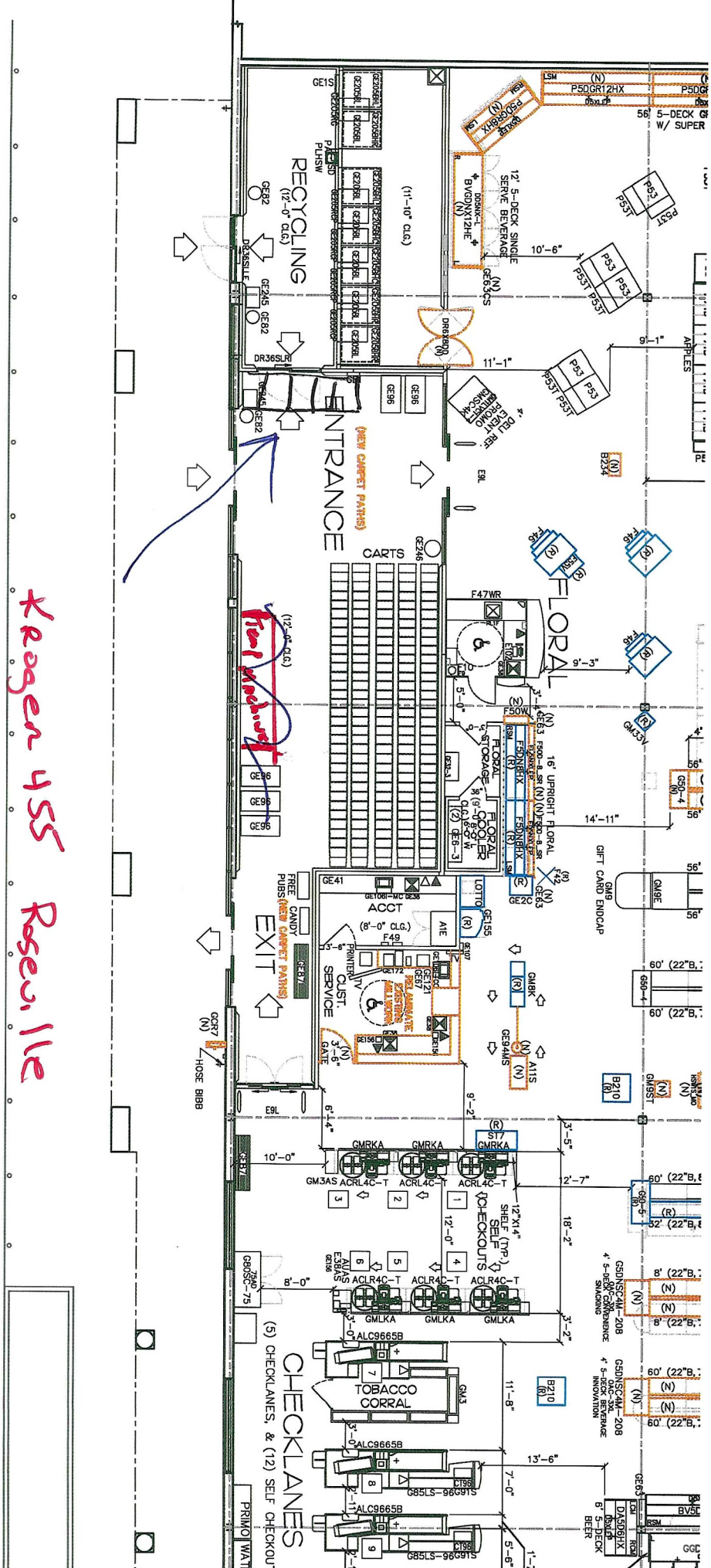
# KROGER 455 ROSEVILLE - TOMRA

PROJECT MANAGER:

GENERAL CONTRACTOR: TONY AND SONS, INC

SUNDAY	MONDAY	TUESDAY	WEDNESDAY	THURSDAY	FRIDAY	SAT
2/4	2/5	2/6	2/7	2/8	2/9	
STORE	FACILITY	CONTRACTOR				
		<p><del>RECYCLE ROOM CLOSED AT END OF DAY</del></p> <p>PM INSTALL POWER FOR TEMP MACHINES</p> <p>DISCONNECT DUCT FROM MACHINES IN 3 PLACES (SAVE CONNECTIONS)</p> <p>REMOVE SINK/FAUCET</p> <p>DEMO PAPER TOWELL DISP</p> <p>REMOVE/SAVE SOAP DISP</p> <p>REMOVE/SAVE BUG ZAPPER</p> <p>DEMO OLD MARLITE</p> <p>DEMO VINYL BASE IN STORAGE ROOM</p> <p>MEASURE/ORDER STAINLESS FOR TOPS OF CURBS</p> <p>DELIVER MATERIALS</p>	<p><del>SAM TOMRA</del> TO INSTALL TEMP MACHINES &amp; REMOVE OLD MACHINES</p> <p><del>STORE TO CLEAN DEBRIS &amp; REMOVE TRASH BINS</del></p> <p><del>VERIFY OPENINGS FOR NEW MACHINES (CUT/ADJUST AS NECESSARY)</del></p> <p>INSTALL MARLITE PANELING &amp; MCCUE BUMPER (TO BE COMPLETED SUNDAY)</p>	<p><del>EPOXY INSTALLATION (INCLUDING STORAGE ROOM)</del></p>	<p><del>COMPLETE EPOXY INSTALLATION</del></p>	<p><del>EPOXY CURE</del></p>
SUNDAY	MONDAY	TUESDAY	WEDNESDAY	THURSDAY	FRIDAY	SAT
2/11	2/12	2/13	2/14	2/15	2/16	
STORE	FACILITY	CONTRACTOR				
<p>REMOVE/REPLACE WHITE FRP AS NECESSARY</p> <p>COMPLETE MARLITE PANELING &amp; MCCUE BUMPER</p>	<p>PAINT WALLS (SW 6203 SPARE WHITE)</p> <p>PAINT DOORS &amp; FRAMES (SW 7046 ANONYMOUS)</p>	<p>INSTALL NEW SINK/FAUCET</p> <p>INSTALL HAND DRYER</p> <p>INSTALL VINYL BASE</p> <p>CLEAN CEILING TILE &amp; LIGHT DIFFUSERS</p> <p>INSTALL BUG ZAPPER</p>	<p><del>SAM TOMRA</del> TO INSTALL NEW MACHINES &amp; REMOVE TEMP MACHINES BY END OF DAY</p> <p><del>RECYCLE ROOM REOPENS</del></p>	<p>REMOVE TEMP POWER</p> <p>REATTACH DUCT TO NEW MACHINES</p> <p>INSTALL SOAP DISPENSER</p> <p>INSTALL STAINLESS ON TOP OF CURBS &amp; STAINLESS CORNERS</p>		

Krogen 455 Roseville





# KROGER 720 HOWELL - TOMRA

PROJECT MANAGER:

GENERAL CONTRACTOR: TONY AND SONS, INC

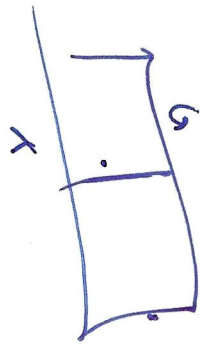
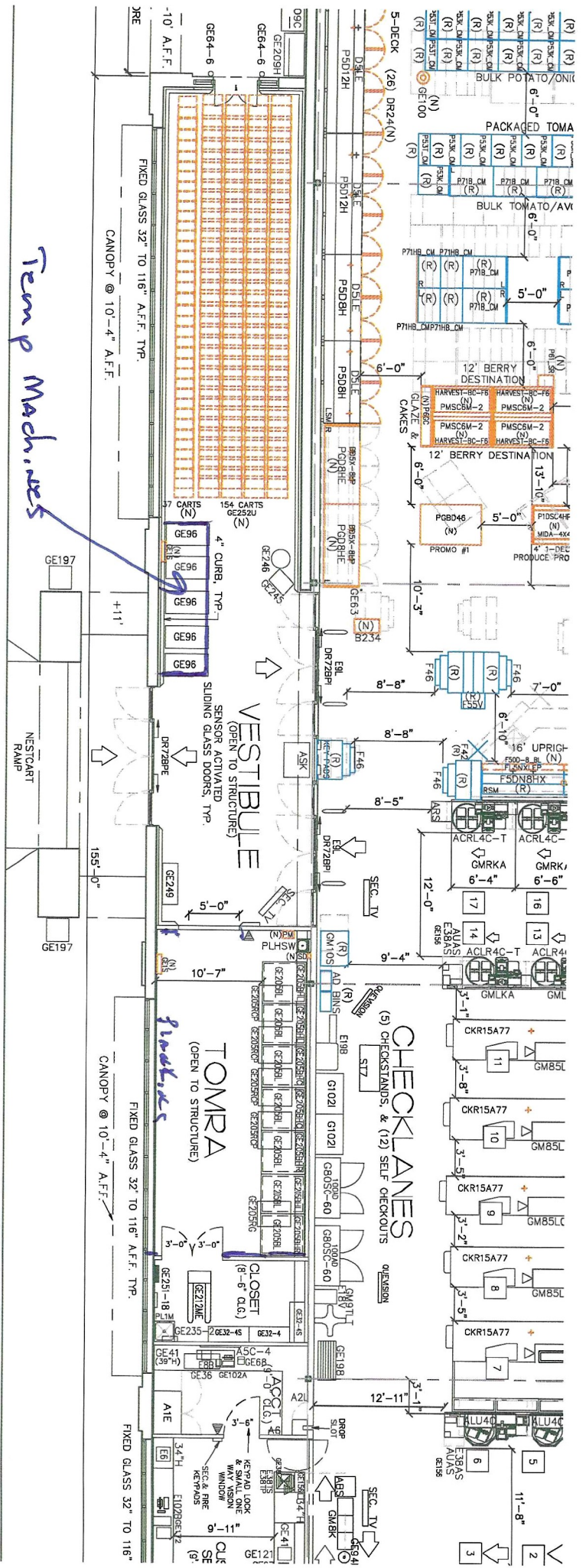
SUNDAY	MONDAY	TUESDAY	WEDNESDAY	THURSDAY	FRIDAY	SAT
2/11	2/12	2/13	2/14	2/15	2/16	
STORE	FACILITY	CONTRACTOR				
				<del>RECYCLE ROOM CLOSED AT END OF DAY</del> PM INSTALL POWER FOR TEMP MACHINES DISCONNECT DUCT FROM MACHINES IN 3 PLACES (SAVE CONNECTIONS) REMOVE SINK/FAUCET DEMO PAPER TOWELL DISP REMOVE/SAVE SOAP DISP REMOVE/SAVE BUG ZAPPER DEMO OLD MARLITE DELIVER MATERIALS	8AM TOMRA TO- INSTALL TEMP MACHINES & REMOVE OLD MACHINES <del>STORE TO CLEAN DEBRIS &amp; REMOVE TRASH BINS</del> <del>STORE TO EMPTY/ CLEAN STORAGE ROOM OF SUPPLIES &amp; SHELVING</del> VERIFY OPENINGS FOR NEW MACHINES (CUT/ADJUST AS NECESSARY) INSTALL MARLITE PANELING & MCCUE BUMPER	

SUNDAY	MONDAY	TUESDAY	WEDNESDAY	THURSDAY	FRIDAY	SAT
2/18	2/19	2/20	2/21	2/22	2/23	
STORE	FACILITY	CONTRACTOR				

REMOVE/REPLACE WHITE FRP AS NECESSARY COMPLETE MARLITE PANELING & MCCUE BUMPER <hr/> <hr/> <hr/> <p style="text-align: center;"><b>SUNDAY</b>     <b>2/25</b></p> REMOVE TEMP POWER REATTACH DUCT TO NEW MACHINES	<del>AM EPOXY INSTALLATION</del>	<del>AM COMPLETE EPOXY INSTALLATION</del>	PAINT WALLS (SW 6203 SPARE WHITE) PAINT DOORS & FRAMES (SW 7046 ANONYMOUS)	INSTALL NEW SINK/FAUCET INSTALL HAND DRYER INSTALL SOAP DISPENSER INSTALL VINYL BASE INSTALL BUG ZAPPER	8AM TOMRA TO- INSTALL NEW MACHINES & REMOVE TEMP MACHINES BY END OF DAY <del>RECYCLE ROOM REOPENS</del>	
--	----------------------------------	---	---	---	---	--

Temp Machines

Kroger 720 Howell





# KROGER 440 BLOOMFIELD HILLS - TOMRA

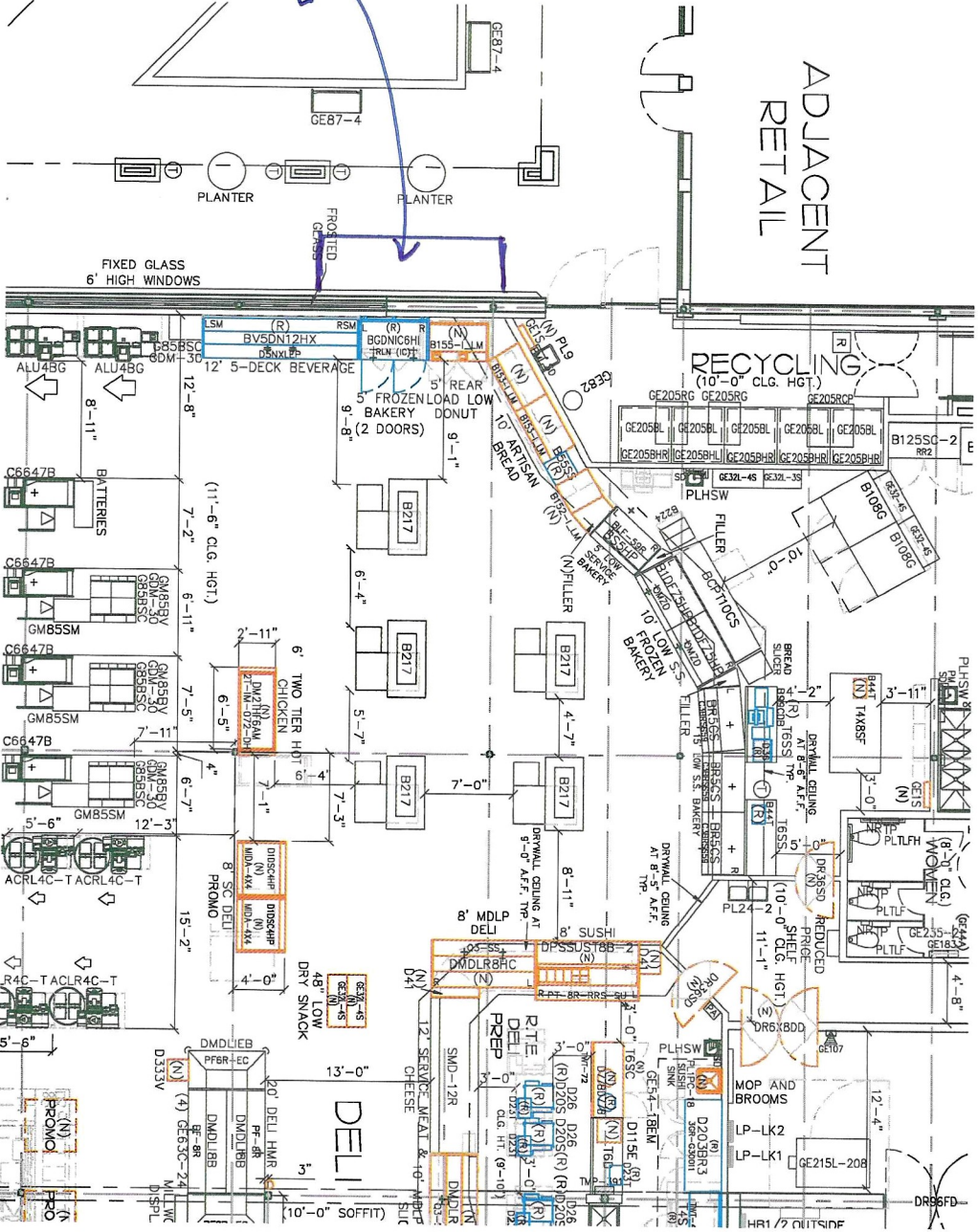
PROJECT MANAGER:

GENERAL CONTRACTOR: TONY AND SONS, INC

SUNDAY	MONDAY	TUESDAY	WEDNESDAY	THURSDAY	FRIDAY	SAT	
2/25	2/26	2/27	2/28	2/29	3/1		
<b>STORE</b>	<b>FACILITY</b>	<b>CONTRACTOR</b>					
				<p><b>RECYCLE ROOM CLOSED AT END OF DAY</b></p> <p>PM INSTALL POWER FOR TEMP MACHINES DISCONNECT DUCT FROM MACHINES IN 3 PLACES (SAVE CONNECTIONS) REMOVE SINK/FAUCET DEMO PAPER TOWELL DISP REMOVE/SAVE SOAP DISP DEMO OLD MARLITE DELIVER MATERIALS</p>	<p>8AM TOMRA TO INSTALL TEMP MACHINES &amp; REMOVE OLD MACHINES <b>STORE TO CLEAN DEBRIS &amp; REMOVE TRASH BINS</b> INSTALL MARLITE PANELING &amp; MCCUE BUMPER</p>		
SUNDAY	MONDAY	TUESDAY	WEDNESDAY	THURSDAY	FRIDAY	SAT	
3/3	3/4	3/5	3/6	3/7	3/8		
<b>STORE</b>	<b>FACILITY</b>	<b>CONTRACTOR</b>					
<p>REMOVE/REPLACE WHITE FRP AS NECESSARY COMPLETE MARLITE PANELING &amp; MCCUE BUMPER</p> <hr/> <p style="text-align: center;"><b>SUNDAY 3/10</b></p> <p>REMOVE TEMP POWER REATTACH DUCT TO NEW MACHINES INSTALL STAINLESS CORNERS</p>	<p><b>AM EPOXY INSTALLATION</b></p>	<p><b>AM COMPLETE EPOXY INSTALLATION</b></p>	<p>PAINT WALLS (SW 6203 SPARE WHITE) PAINT DOOR FRAME (SW 7046 ANONYMOUS)</p>	<p>INSTALL SINK/FAUCET INSTALL HAND DRYER INSTALL SOAP DISPENSER INSTALL VINYL BASE REPLACE CEILING TILE WITH NEW</p>	<p>8AM TOMRA TO INSTALL NEW MACHINES &amp; REMOVE TEMP MACHINES BY END OF DAY <b>RECYCLE ROOM REOPENS</b></p>		

Kroger 440  
Blountfield Hills

Temp  
Machines



ADJACENT  
RETAIL



# KROGER 447 HAZEL PARK - TOMRA

PROJECT MANAGER:

GENERAL CONTRACTOR: TONY AND SONS, INC

SUNDAY	MONDAY	TUESDAY	WEDNESDAY	THURSDAY	FRIDAY	SAT
3/10	3/11	3/12	3/13	3/14	3/15	
STORE	FACILITY	CONTRACTOR				
		<p><b>RECYCLE ROOM CLOSED AT END OF DAY</b></p> <p>PM INSTALL POWER FOR TEMP MACHINES (OUTSIDE &amp; LEFT OF ENTRY)</p> <p>DISCONNECT DUCT FROM MACHINES (SAVE CONNECTIONS)</p> <p>REMOVE SINK/FAUCET</p> <p>DEMO PAPER TOWELL DISP</p> <p>REMOVE/SAVE SOAP DISP</p> <p>REMOVE/SAVE BUG ZAPPER</p> <p>DEMO OLD MARLITE</p> <p>DEMO WALL BASE &amp; VCT FROM TOP OF CURBS</p> <p>DELIVER MATERIALS</p>	<p><b>8AM TOMRA</b> TO INSTALL TEMP MACHINES &amp; REMOVE OLD MACHINES</p> <p><b>STORE TO CLEAN DEBRIS &amp; REMOVE TRASH BINS</b></p> <p><b>STORE TO EMPTY/ CLEAN CLEANING CLOSET OF SUPPLIES &amp; SHELVING</b></p> <p><b>VERIFY OPENINGS FOR NEW MACHINES</b> (CUT ADJUST AS NECESSARY)</p> <p>INSTALL MARLITE PANELING &amp; MCCUE BUMPER</p>	<p><b>EPOXY INSTALLATION</b> (INCLUDING CLEANING CLOSET &amp; TOP OF CURBS)</p>	<p><b>COMPLETE EPOXY INSTALLATION</b></p>	<p><b>EPOXY CURE</b></p>
SUNDAY	MONDAY	TUESDAY	WEDNESDAY	THURSDAY	FRIDAY	SAT
3/17	3/18	3/19	3/20	3/21	3/22	
STORE	FACILITY	CONTRACTOR				
<p>REMOVE/REPLACE WHITE FRP AS NECESSARY</p> <p>COMPLETE MARLITE PANELING &amp; MCCUE BUMPER</p> <p>REPAIR CLOSET DOOR</p>	<p>PAINT WALLS (SW 6203 SPARE WHITE)</p> <p>PAINT DOORS &amp; FRAMES (SW 7046 ANONYMOUS)</p>	<p>INSTALL NEW SINK/FAUCET</p> <p>INSTALL HAND DRYER</p> <p>INSTALL VINYL BASE</p> <p>CLEAN CEILINMG TILE &amp; LIGHT DIFFUSERS</p> <p>INSTALL BUG ZAPPER</p>	<p><b>8AM TOMRA</b> TO INSTALL NEW MACHINES &amp; REMOVE TEMP MACHINES BY END OF DAY</p> <p><b>RECYCLE ROOM REOPENS</b></p>	<p>REMOVE TEMP POWER</p> <p>REATTACH DUCT TO NEW MACHINES</p> <p>INSTALL SOAP DISPOENSER</p> <p>INSTALL STAINLESS ON TOP OF CURBS &amp; STAINLESS CORNERS</p>		

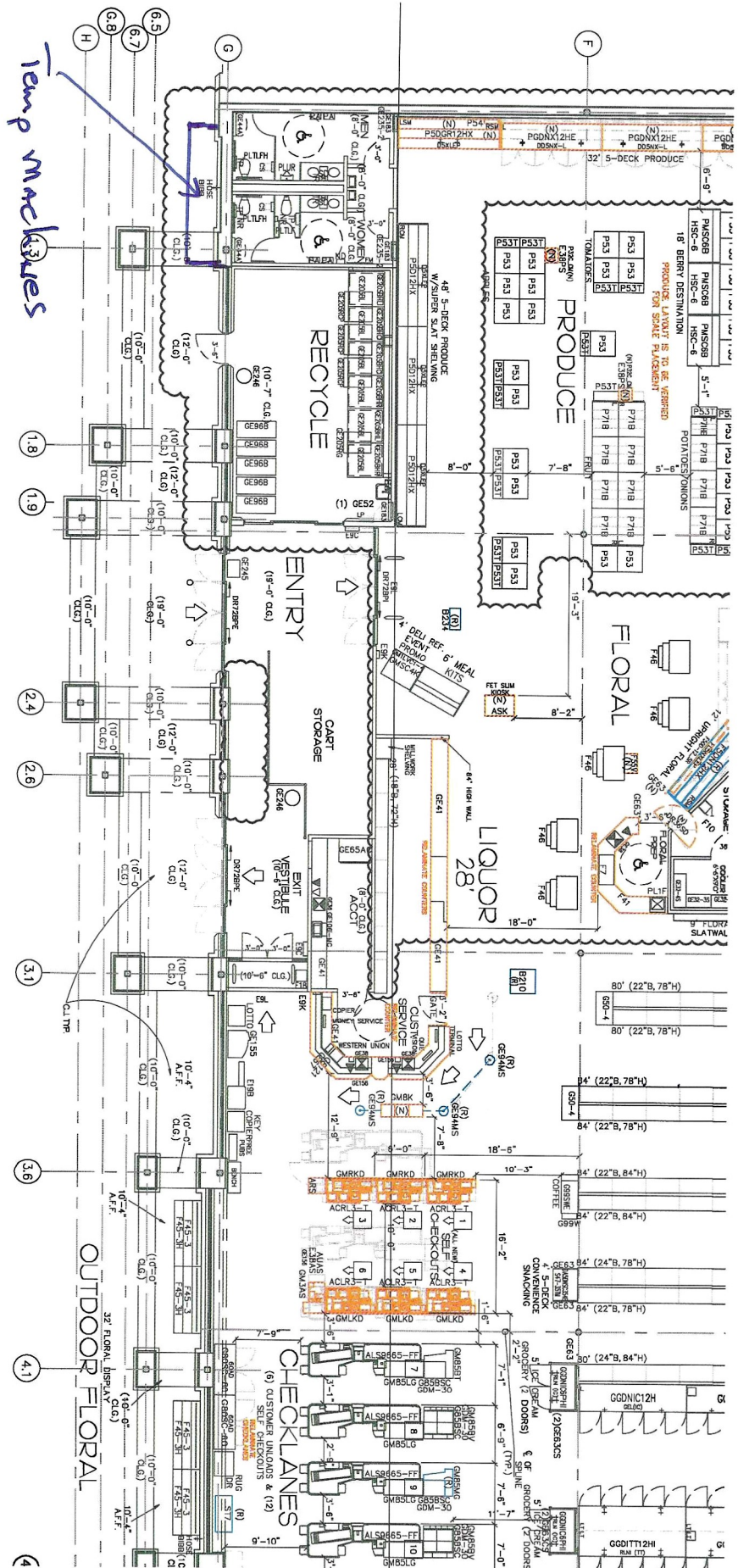
# KROGER 448 TROY - TOMRA

PROJECT MANAGER:

GENERAL CONTRACTOR: TONY AND SONS, INC

SUNDAY	MONDAY	TUESDAY	WEDNESDAY	THURSDAY	FRIDAY	SAT
3/17	3/18	3/19	3/20	3/21	3/22	
STORE	FACILITY	CONTRACTOR				
				<p style="color: red; margin: 0;">RECYCLE ROOM CLOSED AT END OF DAY</p> <p style="margin: 0;">PM INSTALL POWER FOR TEMP MACHINES DISCONNECT DUCT FROM MACHINES (SAVE CONNECTIONS) REMOVE SINK/FAUCET DEMO PAPER TOWELL DISP REMOVE/SAVE SOAP DISP REMOVE/SAVE BUG ZAPPER DISXC/REMOVE/SAVE PLUG STRIP(S) DEMO OLD MARLITE DELIVER MATERIALS</p>	<p style="margin: 0;">8AM TOMRA TO INSTALL TEMP MACHINES &amp; REMOVE OLD MACHINES <span style="color: red;">STORE TO CLEAN DEBRIS &amp; REMOVE TRASH BINS</span> INSTALL MARLITE PANELING &amp; MCCUE BUMPER</p>	
SUNDAY	MONDAY	TUESDAY	WEDNESDAY	THURSDAY	FRIDAY	SAT
3/24	3/25	3/26	3/27	3/28	3/29	
STORE	FACILITY	CONTRACTOR				
<p>REMOVE/REPLAVE WHITE FRP AS NECESSARY COMPLETE MARLITE PANELING &amp; MCCUE BUMPER</p> <hr/> <p style="text-align: center; color: red; margin: 0;"><b>SUNDAY</b></p> <hr/> <p style="text-align: center; margin: 0;">4/01</p> <hr/> <p>REMOVE TEMP POWER REATTACH DUCT TO NEW MACHINES INSTALL STAINLESS CORNER</p>	EPOXY INSTALLATION	COMPLETE EPOXY INSTALLATION	<p>PAINT WALLS (SW 6203 SPARE WHITE) PAINT DOOR FRAME (SW 7046 ANONYMOUS)</p>	<p>INSTALL SINK/FAUCET INSTALL HAND DRYER INSTALL SOAP DISPENSER INSTALL VINYL BASE CLEAN CEILING TILE &amp; DIFFUSERS</p>	<p style="margin: 0;">8AM TOMRA TO INSTALL NEW MACHINES &amp; REMOVE TEMP MACHINES BY END OF DAY <span style="color: red;">RECYCLE ROOM REOPENS</span></p>	





Temp machines

Kroger 448 - Tray

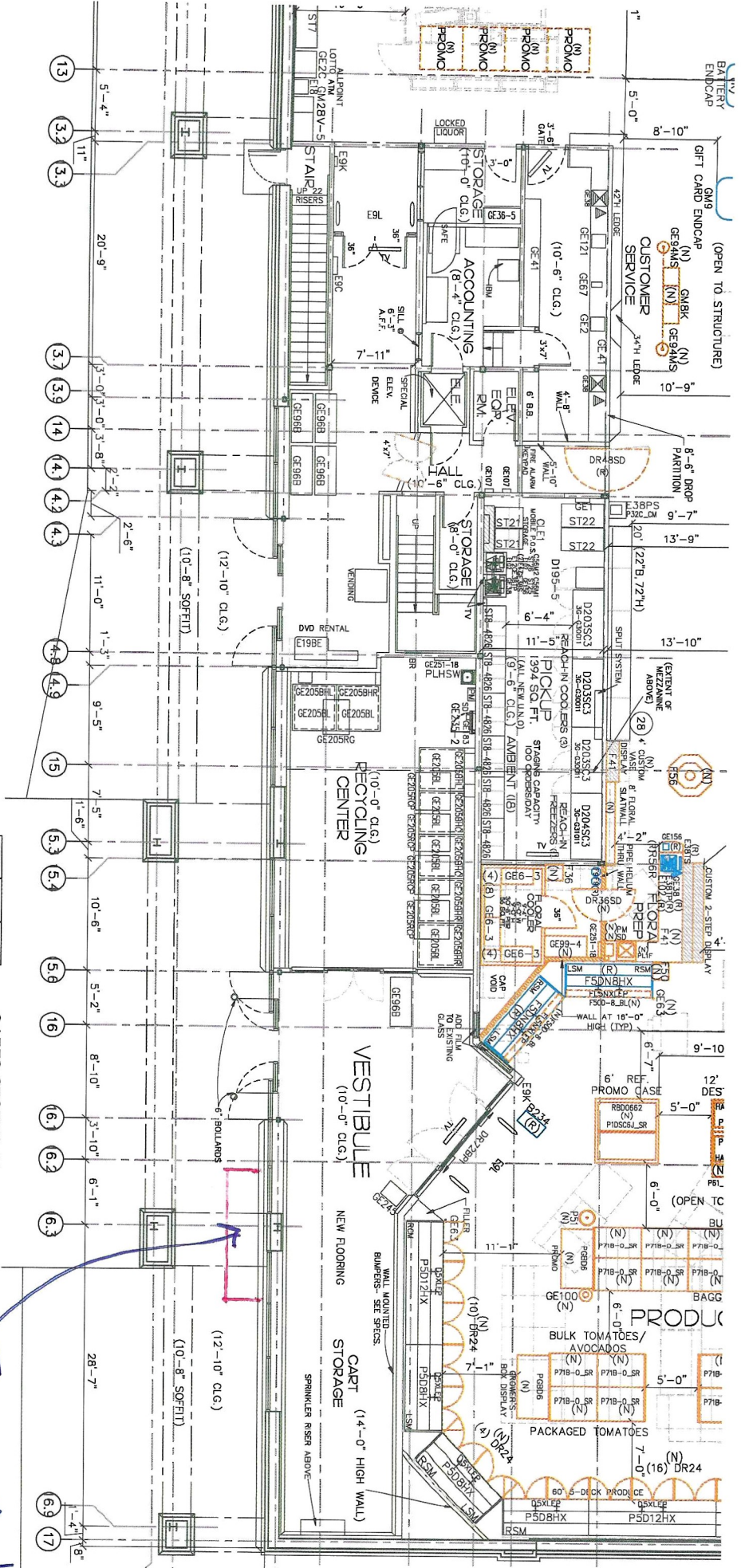
# KROGER 444 HARTLAND - TOMRA

PROJECT MANAGER:

GENERAL CONTRACTOR: TONY AND SONS, INC

SUNDAY	MONDAY	TUESDAY	WEDNESDAY	THURSDAY	FRIDAY	SAT
3/31	4/1	4/2	4/3	4/4	4/5	
<b>STORE</b>	<b>FACILITY</b>	<b>CONTRACTOR</b>				
<b>EASTER</b>	<p><b>RECYCLE ROOM CLOSED AT END OF DAY</b></p> <p>PM INSTALL POWER FOR TEMP MACHINES DISCONNECT DUCT FROM MACHINES <b>(SAVE CONNECTIONS)</b> REMOVE SINK/FAUCET DEMO PAPER TOWELL DISP REMOVE/SAVE SOAP DISP REMOVE/SAVE BUG ZAPPER DISXC/REMOVE/SAVE PLUG STRIP(S) DEMO OLD MARLITE DELIVER MATERIALS</p>	<p><b>8AM TOMRA</b> TO INSTALL TEMP MACHINES &amp; REMOVE OLD MACHINES <b>STORE TO CLEAN DEBRIS &amp; REMOVE TRASH BINS</b> <b>STORE TO EMPTY/CLEAN STORAGE ROOM SUPPLIES &amp; SHELVING</b> <b>VERIFY OPENING FOR NEW MACHINES</b> (CUT/ADJUST AS NECESSARY) INSTALL MARLITE PANELING &amp; MCCUE BUMPER</p>	<p>REMOVE/REPLACE WHITE FRP AS NECESSARY COMPLETE MARLITE PANELING &amp; MCCUE BUMPER</p>	<p><b>EPOXY INSTALLATION</b> (INCLUDING TOP OF CURBS)</p>	<p><b>COMPLETE EPOXY INSTALLATION</b></p>	<p><b>EPOXY CURE</b></p>
SUNDAY	MONDAY	TUESDAY	WEDNESDAY	THURSDAY	FRIDAY	SAT
4/7	4/8	4/9	4/10	4/11	4/12	
<b>STORE</b>	<b>FACILITY</b>	<b>CONTRACTOR</b>				
<p>PAINT WALLS (SW 6203 SPARE WHITE)</p>	<p>INSTALL SINK/FAUCET INSTALL HAND DRYER INSTALL SOAP DISPENSER INSTALL VINYL BASE INSTALL BUG ZAPPER INSTALL MOP HOLDERS</p>	<p><b>8AM TOMRA</b> TO INSTALL NEW MACHINES &amp; REMOVE TEMP MACHINES BY END OF DAY <b>RECYCLE ROOM REOPENS</b></p>	<p>REMOVE TEMP POWER REATTACH DUCT TO NEW MACHINES</p>			





*Kaoger 444 - Start land*

ST22	ST22	ST22
ST22	ST22	ST22
ST22	ST22	ST22

CARTS STORED IN SPACE DURING NON-OPERATIONAL HOURS  
 PAI IFS STOPFN

*Temp Machines*

# KROGER 454 GROSSE POINTE - TOMRA

PROJECT MANAGER:

GENERAL CONTRACTOR: TONY AND SONS, INC

SUNDAY 3/31	MONDAY 4/1	TUESDAY 4/2	WEDNESDAY 4/3	THURSDAY 4/4	FRIDAY 4/5	SAT
STORE	FACILITY	CONTRACTOR				
<b>EASTER</b>		<p>***DEMO OR SAVE EXISTING WOODEN TRACH CABINETS PR ORDER NEW TRASH BINS***</p>	<p><b>RECYCLE ROOM CLOSED AT END OF DAY</b>                      PM INSTALL POWER FOR TEMP MACHINES                      DISCONNECT DUCT FROM MACHINES (<b>SAVE CONNECTIONS</b>)                      REMOVE SINK/FAUCET                      DEMO PAPER TOWELL DISP                      REMOVE/SAVE SOAP DISP                      REMOVE/SAVE BUG ZAPPER                      DISC/REMOVE/SAVE PLUG STRIP(S)                      REMOVE/SAVE WALL DECOR PLAQUES                      DEMO OLD MARLITE                      DELIVER MATERIALS</p>	<p><b>8AM TOMRA</b> TO INSTALL TEMP MACHINES (OUTSIDE RIGHT OF VESTIBULE) &amp; REMOVE OLD MACHINES  <b>STORE TO CLEAN DEBRIS &amp; EMPTY CLEANING CLOSET (EVERYTHING REMOVED FROM FLOOR)</b>  <b>VERIFY OPENING FOR NEW MACHINES</b> (CUT/ADJUST AS NECESSARY)                      DEMO QUARRY FLOOR TILE (SMOOTH DOWN TO CONCRETE)                      DEMO CLEANING ROOM VINYL BASE</p>	<p>COMPLETE DEMO OF QUARRY FLOOR TILE (SMOOTH DOWN TO CONCRETE)</p>	

SUNDAY 4/7	MONDAY 4/8	TUESDAY 4/9	WEDNESDAY 4/10	THURSDAY 4/11	FRIDAY 4/12	SAT
STORE	FACILITY	CONTRACTOR				

<p>REMOVE/REPLACE WHITE FRP AS NECESSARY                      INSTALL MARLITE PANELING &amp; MCCUE BUMPER</p> <hr/> <p style="text-align: center;"><b>SUNDAY 4/14</b></p> <p>REMOVE TEMP POWER                      REATTACH DUCT TO NEW MACHINES</p>	<p><b>EPOXY PREP &amp; INSTALLATION</b></p>	<p><b>COMPLETE EPOXY INSTALLATION</b></p>	<p>PAINT WALLS (SW 6203 SPARE WHITE) PAINT                      DOOR FRAME (SW 7046 ANONYMOUS)                      COMPLETE WALL PANELING &amp; MCCUE BUMPER</p>	<p>INSTALL SINK/FAUCET                      INSTALL HAND DRYER                      INSTALL SOAP DISPENSER                      REINSTALL DECOR WALL PLAQUES                      INSTALL VINYL BASE                      REPLACE/CLEAN CLEAN CEILING TILE AS NECESSARY                      CLEAN VCT ON TOP OF CURBS</p>	<p><b>8AM TOMRA</b> TO INSTALL NEW MACHINES &amp; REMOVE TEMP MACHINES BY END OF DAY  <b>RECYCLE ROOM REOPENS</b></p>	
---	---	---	---	--	---	--





# KROGER 577 DUNDEE - TOMRA

PROJECT MANAGER:

GENERAL CONTRACTOR: TONY AND SONS, INC

SUNDAY	MONDAY	TUESDAY	WEDNESDAY	THURSDAY	FRIDAY	SAT
4/7	4/8	4/9	4/10	4/11	4/12	
STORE	FACILITY	CONTRACTOR				
		<p><b>RECYCLE ROOM CLOSED AT END OF DAY</b></p> <p>PM INSTALL POWER FOR TEMP MACHINES DISCONNECT DUCT FROM MACHINES (SAVE CONNECTIONS) DEMO PAPER TOWELL DISP REMOVE/SAVE SOAP DISP DEMO OLD MARLITE &amp; VINYL BASE DELIVER MATERIALS</p>	<p><b>8AM TOMRA</b> TO INSTALL TEMP MACHINES &amp; REMOVE OLD MACHINES <b>STORE TO CLEAN DEBRIS &amp; REMOVE TRASH BINS</b> <b>VERIFY OPENINGS &amp; ADJUST AS NECESSARY</b> INSTALL MARLITE PANELING MEASURE/ORDER STAINLESS CORNERS (AROUND MACHINE OPENINGS &amp; TOP OF STAINLESS CURBS)</p>	EPOXY INSTALLATION	COMPLETE EPOXY INSTALLATION	EPOXY CURE
SUNDAY	MONDAY	TUESDAY	WEDNESDAY	THURSDAY	FRIDAY	SAT
4/14	4/15	4/16	4/17	4/18	4/19	
STORE	FACILITY	CONTRACTOR				
<p>REMOVE/REPLACE WHITE FRP AS NECESSARY COMPLETE MARLITE PANELING &amp; MCCUE BUMPER</p>	<p>PAINT WALLS (SW 6203 SPARE WHITE) PAINT DOOR FRAME (SW 7046 ANONYMOUS)</p>	<p>INSTALL HAND DRYER INSTALL SOAP DISPENSER INSTALL VINYL BASE CLEAN CEILING TILE &amp; DIFFUSERS</p>	<p><b>8AM TOMRA</b> TO INSTALL NEW MACHINES &amp; REMOVE TEMP MACHINES BY END OF DAY <b>RECYCLE ROOM REOPENS</b></p>	<p>REMOVE TEMP POWER REATTACH DUCT TO NEW MACHINES INSTALL STAINLESS CORNERS INSTALL NEW STAINLESS ON TOP OF CURBS</p>		





# KROGER 686 TAYLOR - TOMRA

PROJECT MANAGER:

GENERAL CONTRACTOR: TONY AND SONS, INC

SUNDAY	MONDAY	TUESDAY	WEDNESDAY	THURSDAY	FRIDAY	SAT	
4/14	4/15	4/16	4/17	4/18	4/19		
STORE	FACILITY	CONTRACTOR					
				<p><b>RECYCLE ROOM CLOSED AT END OF DAY</b></p> <p><b>PM</b> INSTALL POWER FOR TEMP MACHINES                      DISCONNECT DUCT FROM MACHINES <b>(SAVE CONNECTIONS)</b>                      REMOVE SINK/FAUCET                      DEMO PAPER TOWELL DISP                      REMOVE/SAVE SOAP DISP                      REMOVE/SAVE BUG ZAPPER                      REMOVE/SAVE MOP HOLDER                      DEMO TRASH CABINET                      DEMO OLD MARLITE &amp; VINYL BASE                      DELIVER MATERIALS</p>	<p><b>8AM TOMRA TO</b> INSTALL TEMP MACHINES &amp; REMOVE OLD MACHINES  <b>STORE TO CLEAN DEBRIS &amp; REMOVE TRASH BINS</b>                      INSTALL MARLITE PANELING &amp; MCCUE BUMPER</p>		
SUNDAY	MONDAY	TUESDAY	WEDNESDAY	THURSDAY	FRIDAY	SAT	
4/21	4/22	4/23	4/24	4/25	4/26		
STORE	FACILITY	CONTRACTOR					
REMOVE/REPLACE WHITE FRP AS NECESSARY COMPLETE MARLITE PANELING & MCCUE BUMPER <p style="text-align: center;"><b>SUNDAY 4/28</b></p> REMOVE TEMP POWER REATTACH DUCT TO NEW MACHINES	<b>EPOXY INSTALLATION</b>	<b>COMPLETE EPOXY INSTALLATION</b>	PAINT WALLS (SW 6203 SPARE WHITE) PAINT DOOR FRAME (SW 7046 ANONYMOUS)	INSTALL SINK/FAUCET INSTALL HAND DRYER INSTALL SOAP DISPENSER INTALL MOP HOLDER INSTALL VINYL BASE CLEAN CEILING TILE AS NECESSARY	<p><b>8AM TOMRA TO</b> INSTALL NEW MACHINES &amp; REMOVE TEMP MACHINES BY END OF DAY  <b>RECYCLE ROOM REOPENS</b></p>		

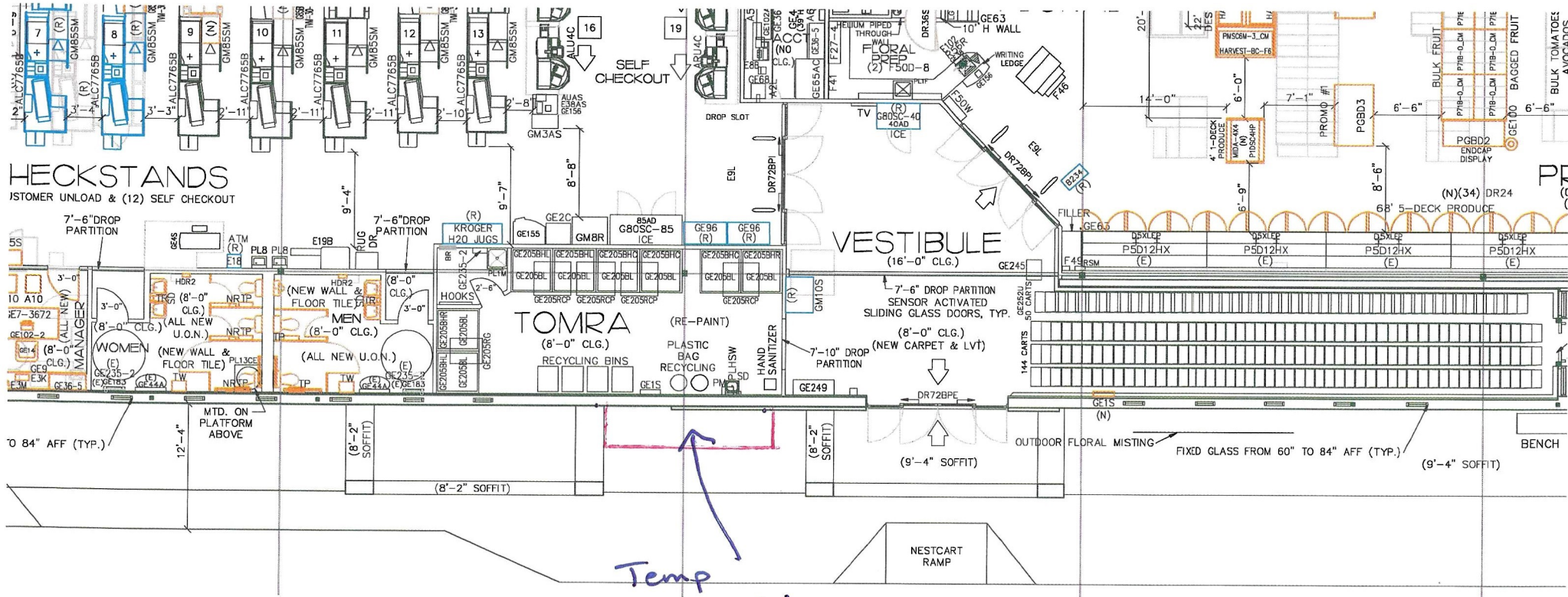


# KROGER 714 DAVISON - TOMRA

PROJECT MANAGER:

GENERAL CONTRACTOR: TONY AND SONS, INC

SUNDAY	MONDAY	TUESDAY	WEDNESDAY	THURSDAY	FRIDAY	SAT
4/21	4/22	4/23	4/24	4/25	4/26	
STORE	FACILITY	CONTRACTOR				
<p><b>RECYCLE ROOM CLOSED AT END OF DAY</b></p> <p>PM INSTALL POWER FOR TEMP MACHINES DISCONNECT DUCT FROM MACHINES (SAVE CONNECTIONS) REMOVE SINK/FAUCET DEMO PAPER TOWELL DISP REMOVE/SAVE SOAP DISP REMOVE/SAVE BUG ZAPPER DEMO OLD MARLITE DELIVER MATERIALS</p>	<p><b>8AM TOMRA</b> TO INSTALL TEMP MACHINES &amp; REMOVE OLD MACHINES <b>STORE TO CLEAN DEBRIS &amp; REMOVE TRASH BINS</b> <b>STORE TO EMPTY/CLEAN CLEANING CLOSET OF SUPPLIES &amp; SHELVING</b> <b>VERIFY OPENINGS FOR NEW MACHINES</b> (CUT/ADJUST AS NECESSARY) DEMO VINYL BASE IN STORAGE ROOM CLOSET INSTALL MARLITE PANELING &amp; MCCUE BUMPER</p>	<p>REMOVE/REPLACE WHITE FRP AS NECESSARY COMPLETE MARLITE PANELING &amp; MCCUE BUMPER</p>	<p>PAINT WALLS (SW 6203 SPARE WHITE) PAINT DOOR FRAME (SW 7046 ANONYMOUS)</p>	<p><b>EPOXY INSTALLATION INCLUDING COVE BASE</b></p>	<p><b>COMPLETE EPOXY INSTALLTION</b></p>	<p><b>EPOXY CURE</b></p>
SUNDAY	MONDAY	TUESDAY	WEDNESDAY	THURSDAY	FRIDAY	SAT
4/28	4/29	4/30	5/1	5/2	5/3	
STORE	FACILITY	CONTRACTOR				
<p>INSTALL SINK/FAUCET INSTALL HAND DRYER INSTALL SOAP DISPENSER INSTALL BUG ZAPPER INSTALL VINYL BASE IN STARGE CLOSET</p>	<p><b>8AM TOMRA</b> TO INSTALL NEW MACHINES &amp; REMOVE TEMP MACHINES BY END OF DAY <b>RECYCLE ROOM REOPENS</b></p>	<p>REMOVE TEMP POWER REATTACH DUCT TO NEW MACHINES INSTALL ANY STAINLESS CORNERS NEEDED</p>				



Kroger 714 DAVISON

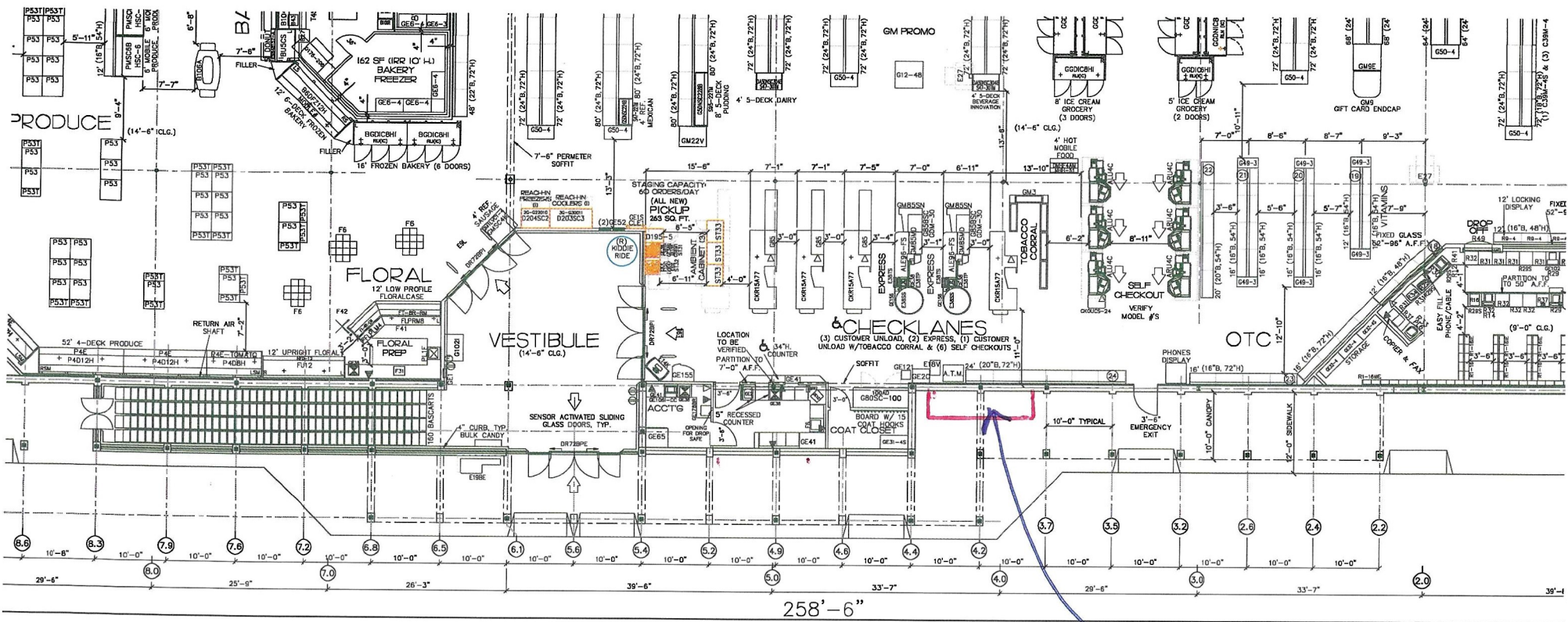


# KROGER 715 PORT HURON - TOMRA

PROJECT MANAGER:

GENERAL CONTRACTOR: TONY AND SONS, INC

SUNDAY	MONDAY	TUESDAY	WEDNESDAY	THURSDAY	FRIDAY	SAT
5/5	5/6	5/7	5/8	5/9	5/10	
STORE	FACILITY	CONTRACTOR				
		<p><b>RECYCLE ROOM CLOSED AT END OF DAY</b></p> <p>PM INSTALL POWER FOR TEMP MACHINES DISCONNECT DUCT FROM MACHINES (SAVE CONNECTIONS) REMOVE SINK/FAUCET DEMO PAPER TOWELL DISP REMOVE/SAVE SOAP DISP REMOVE/SAVE BUG ZAPPER DEMO OLD MARLITE &amp; VINYL BASE DELIVER MATERIALS</p>	<p>8AM TOMRA TO INSTALL TEMP MACHINES &amp; REMOVE OLD MACHINES <b>STORE TO CLEAN DEBRIS &amp; REMOVE TRASH BINS</b> <b>VERIFY OPENINGS/ADJUST AS NECESSARY</b> INSTALL MARLITE PANELING &amp; MCCUE BUMPER</p>	<p>EPOXY INSTALLATION INCLUDING BEHIND FRONT OF MACHINES (BACK ROOM)</p>	<p>COMPLETE EPOXY INSTALLATION</p>	<p>EPOXY CURE</p>
SUNDAY	MONDAY	TUESDAY	WEDNESDAY	THURSDAY	FRIDAY	SAT
5/12	5/13	5/14	5/15	5/16	5/17	
STORE	FACILITY	CONTRACTOR				
<p>REMOVE/REPLACE WHITE FRP AS NECESSARY COMPLETE MARLITE PANELING &amp; MCCUE BUMPER</p>	<p>PAINT WALLS (SW 6203 SPARE WHITE) PAINT DOOR FRAME (SW 7046 ANONYMOUS)</p>	<p>INSTALL SINK/FAUCET INSTALL HAND DRYER INSTALL SOAP DISPENSER INSTALL VINYL BASE CLEAN CEILING TILE &amp; DIFFUSERS</p>	<p>8AM TOMRA TO INSTALL NEW MACHINES &amp; REMOVE TEMP MACHINES BY END OF DAY <b>RECYCLE ROOM REOPENS</b></p>	<p>REMOVE TEMP POWER REATTACH DUCT TO NEW MACHINES INSTALL STAINLESS CORNERS</p>		



5134	5135	5136	5137
------	------	------	------

 PICKING CARTS STORED IN SPACE DURING NON-OPERATIONAL HOURS  
 (5) CLICKLIST  
 U-BOAT CARTS  
 MOBILE CART MOUNTED SCALES  
 FIGURES DISPLAYED FOR ORDERING PURPOSES

Temp machines

Kroger 715 Port Huron