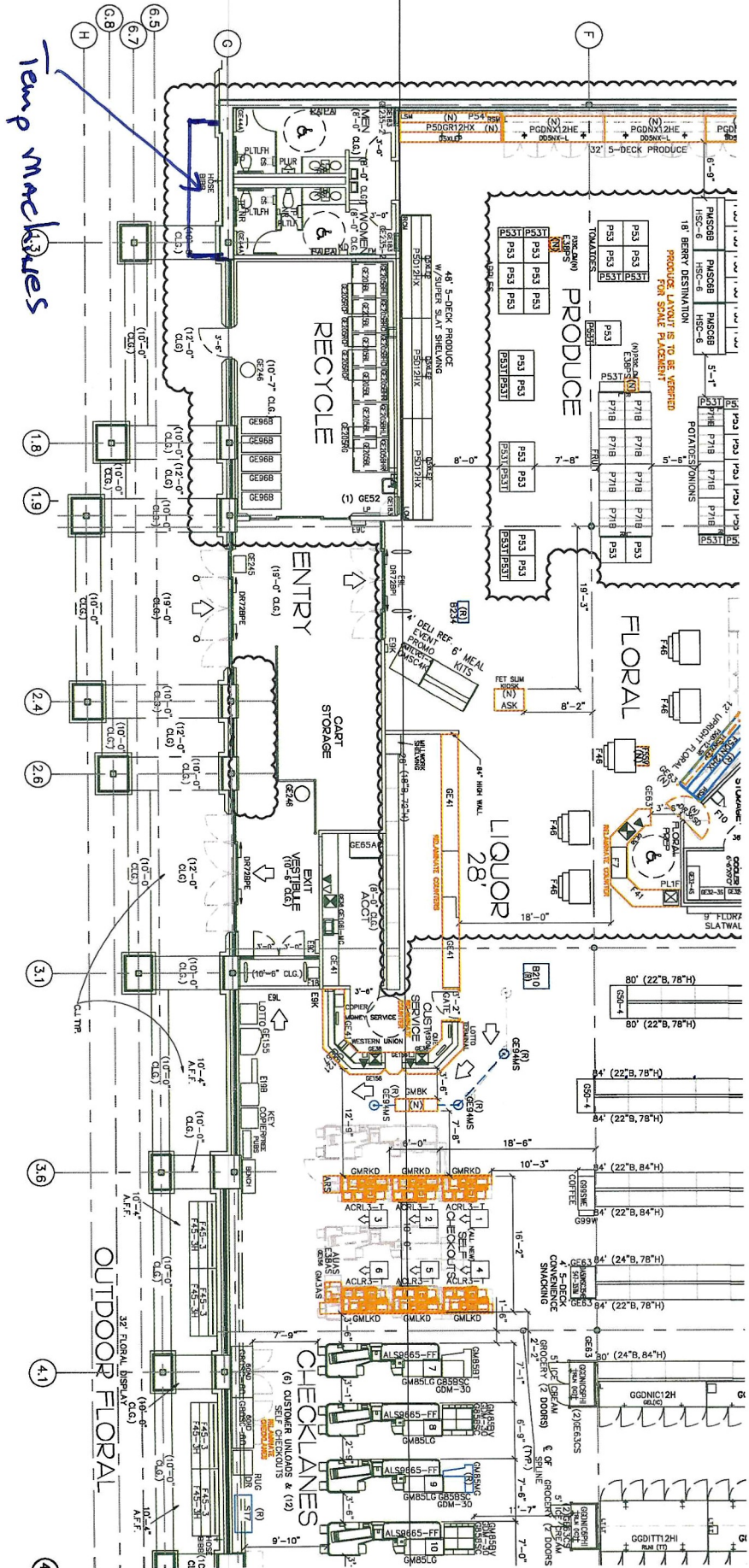


# KROGER 455 ROSEVILLE - TOMRA

PROJECT MANAGER:

GENERAL CONTRACTOR: TONY AND SONS, INC

SUNDAY	MONDAY	TUESDAY	WEDNESDAY	THURSDAY	FRIDAY	SAT
2/4	2/5	2/6	2/7	2/8	2/9	
STORE	FACILITY	CONTRACTOR				
		<p><b>RECYCLE ROOM CLOSED AT END OF DAY</b></p> <p>PM INSTALL POWER FOR TEMP MACHINES DISCONNECT DUCT FROM MACHINES IN 3 PLACES (SAVE CONNECTIONS) REMOVE SINK/FAUCET DEMO PAPER TOWELL DISP REMOVE/SAVE SOAP DISP REMOVE/SAVE BUG ZAPPER DEMO OLD MARLITE DEMO VINYL BASE IN STORAGE ROOM MEASURE/ORDER STAINLESS FOR TOPS OF CURBS DELIVER MATERIALS</p>	<p>8AM TOMRA TO INSTALL TEMP MACHINES &amp; REMOVE OLD MACHINES</p> <p><b>STORE TO CLEAN DEBRIS &amp; REMOVE TRASH BINS</b></p> <p><b>VERIFY OPENINGS FOR NEW MACHINES</b> (CUT/ADJUST AS NECESSARY) INSTALL MARLITE PANELING &amp; MCCUE BUMPER (TO BE COMPLETED SUNDAY)</p>	<p><b>EPOXY INSTALLATION</b> (INCLUDING STORAGE ROOM)</p>	<p><b>COMPLETE EPOXY INSTALLATION</b></p>	<p><b>EPOXY CURE</b></p>
SUNDAY	MONDAY	TUESDAY	WEDNESDAY	THURSDAY	FRIDAY	SAT
2/11	2/12	2/13	2/14	2/15	2/16	
STORE	FACILITY	CONTRACTOR				
<p>REMOVE/REPLACE WHITE FRP AS NECESSARY COMPLETE MARLITE PANELING &amp; MCCUE BUMPER</p>	<p>PAINT WALLS (SW 6203 SPARE WHITE) PAINT DOORS &amp; FRAMES (SW 7046 ANONYMOUS)</p>	<p>INSTALL NEW SINK/FAUCET INSTALL HAND DRYER INSTALL VINYL BASE CLEAN CEILINMG TILE &amp; LIGHT DIFFUSERS INSTALL BUG ZAPPER</p>	<p>8AM TOMRA TO INSTALL NEW MACHINES &amp; REMOVE TEMP MACHINES BY END OF DAY</p> <p><b>RECYCLE ROOM REOPENS</b></p>	<p>REMOVE TEMP POWER REATTACH DUCT TO NEW MACHINES INSTALL SOAP DISPOENSER INSTALL STAINLESS ON TOP OF CURBS &amp; STAINLESS CORNERS</p>		



Kroger 448 - Troy

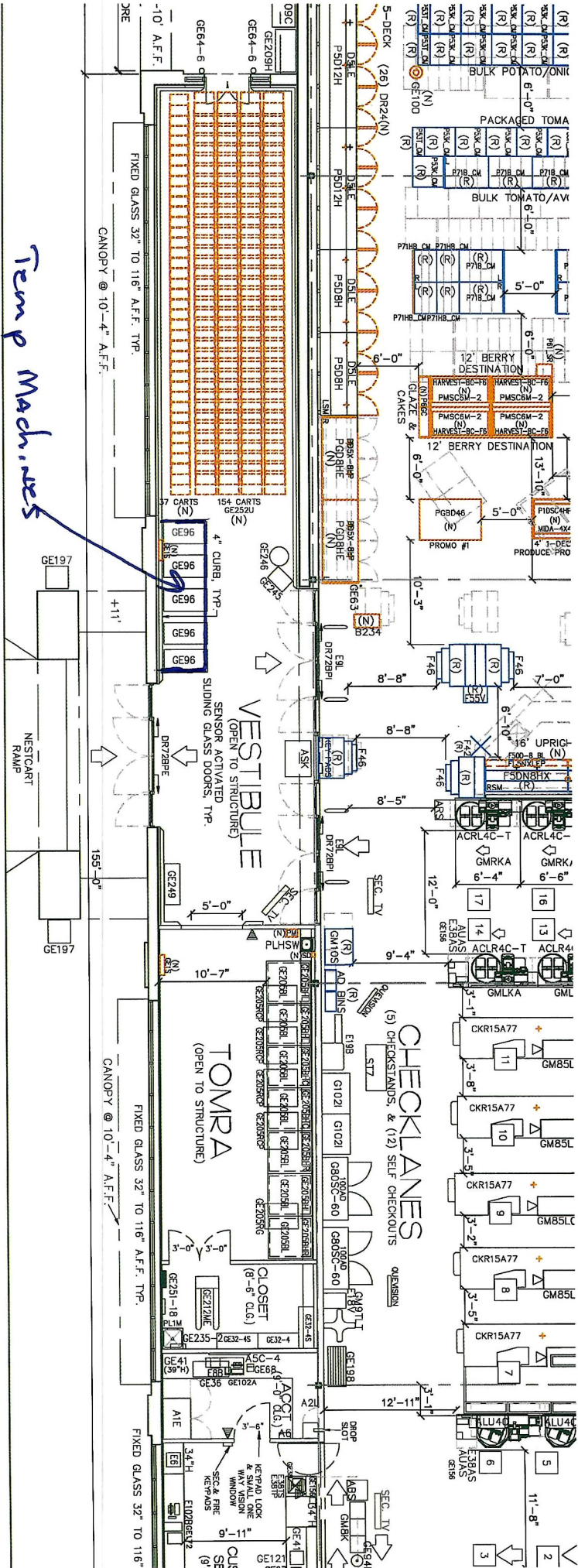
# KROGER 720 HOWELL - TOMRA

PROJECT MANAGER:

GENERAL CONTRACTOR: TONY AND SONS, INC

SUNDAY	MONDAY	TUESDAY	WEDNESDAY	THURSDAY	FRIDAY	SAT	
2/11	2/12	2/13	2/14	2/15	2/16		
STORE	FACILITY	CONTRACTOR					
				<p><b>RECYCLE ROOM CLOSED AT END OF DAY</b></p> <p>PM INSTALL POWER FOR TEMP MACHINES DISCONNECT DUCT FROM MACHINES IN 3 PLACES (<b>SAVE CONNECTIONS</b>) REMOVE SINK/FAUCET DEMO PAPER TOWELL DISP REMOVE/SAVE SOAP DISP REMOVE/SAVE BUG ZAPPER DEMO OLD MARLITE DELIVER MATERIALS</p>	<p><b>8AM TOMRA TO</b> INSTALL TEMP MACHINES &amp; REMOVE OLD MACHINES <b>STORE TO CLEAN DEBRIS &amp; REMOVE TRASH BINS</b> <b>STORE TO EMPTY/ CLEAN STORAGE ROOM OF SUPPLIES &amp; SHELVING</b> <b>VERIFY OPENINGS FOR NEW MACHINES</b> (CUT/ADJUST AS NECESSARY) INSTALL MARLITE PANELING &amp; MCCUE BUMPER</p>		
SUNDAY	MONDAY	TUESDAY	WEDNESDAY	THURSDAY	FRIDAY	SAT	
2/18	2/19	2/20	2/21	2/22	2/23		
STORE	FACILITY	CONTRACTOR					
<p>REMOVE/REPLACE WHITE FRP AS NECESSARY COMPLETE MARLITE PANELING &amp; MCCUE BUMPER</p> <hr/> <p style="text-align: right;"><b>SUNDAY 2/25</b></p> <p>REMOVE TEMP POWER REATTACH DUCT TO NEW MACHINES</p>	<p><b>AM EPOXY INSTALLATION</b></p>	<p><b>AM COMPLETE EPOXY INSTALLATION</b></p>	<p>PAINT WALLS (SW 6203 SPARE WHITE) PAINT DOORS &amp; FRAMES (SW 7046 ANONYMOUS)</p>	<p>INSTALL NEW SINK/FAUCET INSTALL HAND DRYER INSTALL SOAP DISPENSER INSTALL VINYL BASE INSTALL BUG ZAPPER</p>	<p><b>8AM TOMRA TO</b> INSTALL NEW MACHINES &amp; REMOVE TEMP MACHINES BY END OF DAY <b>RECYCLE ROOM REOPENS</b></p>		





Temp Machines  
Kroger 720 Howell

Temp Machines

CANOPY @ 10'-4" A.F.F.

FIXED GLASS 32" TO 116" A.F.F. TYP.

+11'

155'-0"

CANOPY @ 10'-4" A.F.F.

FIXED GLASS 32" TO 116" A.F.F. TYP.

FIXED GLASS 32" TO 116"

TOMRA  
(OPEN TO STRUCTURE)

CHECK LANES  
(5) CHECKSTANDS, & (12) SELF CHECKOUTS

VESTIBULE  
(OPEN TO STRUCTURE)

SENSOR ACTIVATED SLIDING GLASS DOORS TYP.

4" CURB TYP.

154 CARTS GE252U

37 CARTS

GE96

GE96

GE96

GE96

GE96

GE96

GE96

GE96

GE96

GE96

GE96

GE96

GE96

GE96

GE96

GE96

GE96

GE96

GE96

GE96

GE96

GE96

GE96

GE96

GE96

GE96

GE96

GE96

GE96

GE96

GE96

GE96

GE96

GE96

GE96



# KROGER 440 BLOOMFIELD HILLS - TOMRA

PROJECT MANAGER:

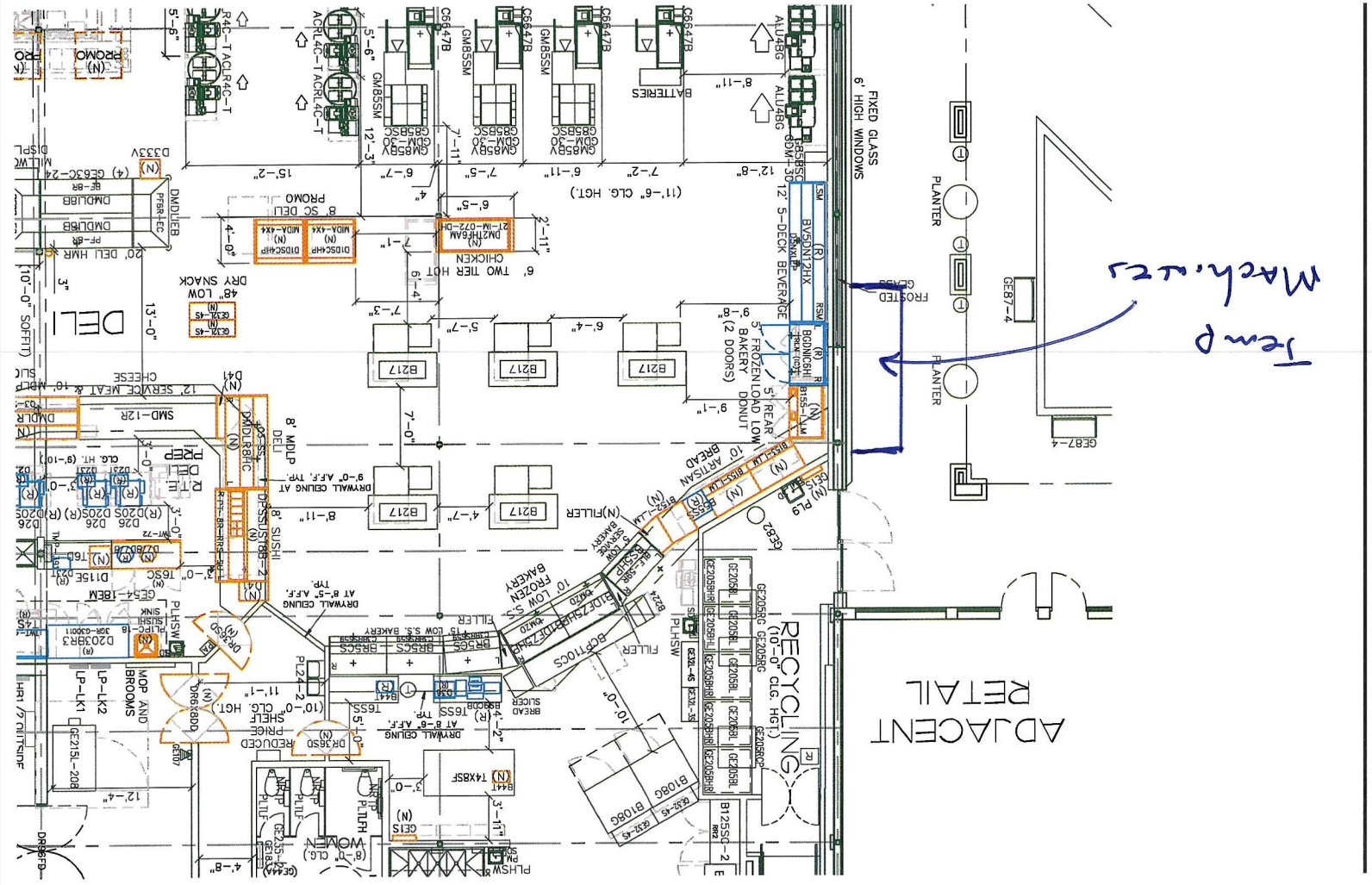
GENERAL CONTRACTOR: TONY AND SONS, INC

SUNDAY	MONDAY	TUESDAY	WEDNESDAY	THURSDAY	FRIDAY	SAT	
2/25	2/26	2/27	2/28	2/29	3/1		
<b>STORE</b>	<b>FACILITY</b>	<b>CONTRACTOR</b>					
				<p><b>RECYCLE ROOM CLOSED AT END OF DAY</b></p> <p><b>PM</b> INSTALL POWER FOR TEMP MACHINES DISCONNECT DUCT FROM MACHINES IN 3 PLACES (<b>SAVE CONNECTIONS</b>) REMOVE SINK/FAUCET DEMO PAPER TOWELL DISP REMOVE/SAVE SOAP DISP DEMO OLD MARLITE DELIVER MATERIALS</p>	<p><b>8AM TOMRA TO</b> INSTALL TEMP MACHINES &amp; REMOVE OLD MACHINES <b>STORE TO CLEAN DEBRIS &amp; REMOVE TRASH BINS</b> INSTALL MARLITE PANELING &amp; MCCUE BUMPER</p>		
SUNDAY	MONDAY	TUESDAY	WEDNESDAY	THURSDAY	FRIDAY	SAT	
3/3	3/4	3/5	3/6	3/7	3/8		
<b>STORE</b>	<b>FACILITY</b>	<b>CONTRACTOR</b>					
<p>REMOVE/REPLAVE WHITE FRP AS NECESSARY COMPLETE MARLITE PANELING &amp; MCCUE BUMPER</p> <hr/> <p style="text-align: center;"><b>SUNDAY 3/10</b></p> <p>REMOVE TEMP POWER REATTACH DUCT TO NEW MACHINES INSTALL STAINLESS CORNERS</p>	<p><b>AM EPOXY INSTALLATION</b></p>	<p><b>AM COMPLETE EPOXY INSTALLATION</b></p>	<p>PAINT WALLS (SW 6203 SPARE WHITE) PAINT DOOR FRAME (SW 7046 ANONYMOUS)</p>	<p>INSTALL SINK/FAUCET INSTALL HAND DRYER INSTALL SOAP DISPENSER INSTALL VINYL BASE REPLACE CEILING TILE WITH NEW</p>	<p><b>8AM TOMRA TO</b> INSTALL NEW MACHINES &amp; REMOVE TEMP MACHINES BY END OF DAY <b>RECYCLE ROOM REOPENS</b></p>		

Kroger 440  
Bloomfield Hills

Temp  
Machines

ADJACENT  
RETAIL





# KROGER 447 HAZEL PARK - TOMRA

PROJECT MANAGER:

GENERAL CONTRACTOR: TONY AND SONS, INC

SUNDAY	MONDAY	TUESDAY	WEDNESDAY	THURSDAY	FRIDAY	SAT
2/25	3/11	3/12	3/13	3/14	3/15	
<b>STORE</b>	<b>FACILITY</b>	<b>CONTRACTOR</b>				
		<p><b>RECYCLE ROOM CLOSED AT END OF DAY</b></p> <p>PM INSTALL POWER FOR TEMP MACHINES (OUTSIDE &amp; LEFT OF ENTRY)</p> <p>DISCONNECT DUCT FROM MACHINES (<b>SAVE CONNECTIONS</b>)</p> <p>REMOVE SINK/FAUCET</p> <p>DEMO PAPER TOWELL DISP</p> <p>REMOVE/SAVE SOAP DISP</p> <p>REMOVE/SAVE BUG ZAPPER</p> <p>DEMO OLD MARLITE</p> <p>DEMO WALL BASE &amp; VCT FROM TOP OF CURBS</p> <p>DELIVER MATERIALS</p>	<p><b>8AM TOMRA</b> TO INSTALL TEMP MACHINES &amp; REMOVE OLD MACHINES</p> <p><b>STORE TO CLEAN DEBRIS &amp; REMOVE TRASH BINS</b></p> <p><b>STORE TO EMPTY/ CLEAN CLEANING CLOSET OF SUPPLIES &amp; SHELVING</b></p> <p><b>VERIFY OPENINGS FOR NEW MACHINES</b> (CUT ADJUST AS NECESSARY)</p> <p>INSTALL MARLITE PANELING &amp; MCCUE BUMPER</p>	<p><b>EPOXY INSTALLATION</b> (INCLUDING CLEANING CLOSET &amp; TOP OF CURBS)</p>	<p><b>COMPLETE EPOXY INSTALLATION</b></p>	<p><b>EPOXY CURE</b></p>
SUNDAY	MONDAY	TUESDAY	WEDNESDAY	THURSDAY	FRIDAY	SAT
3/17	3/18	3/19	3/20	3/21	3/22	
<b>STORE</b>	<b>FACILITY</b>	<b>CONTRACTOR</b>				
<p>REMOVE/REPLACE WHITE FRP AS NECESSARY</p> <p>COMPLETE MARLITE PANELING &amp; MCCUE BUMPER</p> <p>REPAIR CLOSET DOOR</p>	<p>PAINT WALLS (SW 6203 SPARE WHITE) PAINT</p> <p>DOORS &amp; FRAMES (SW 7046 ANONYMOUS)</p>	<p>INSTALL NEW SINK/FAUCET</p> <p>INSTALL HAND DRYER</p> <p>INSTALL VINYL BASE</p> <p>CLEAN CEILINMG TILE &amp; LIGHT DIFFUSERS</p> <p>INSTALL BUG ZAPPER</p>	<p><b>8AM TOMRA</b> TO INSTALL NEW MACHINES &amp; REMOVE TEMP MACHINES BY END OF DAY</p> <p><b>RECYCLE ROOM REOPENS</b></p>	<p>REMOVE TEMP POWER</p> <p>REATTACH DUCT TO NEW MACHINES</p> <p>INSTALL SOAP DISPENSER</p> <p>INSTALL STAINLESS ON TOP OF CURBS &amp; STAINLESS CORNERS</p>		

# KROGER 448 TROY - TOMRA

PROJECT MANAGER:

GENERAL CONTRACTOR: TONY AND SONS, INC

SUNDAY	MONDAY	TUESDAY	WEDNESDAY	THURSDAY	FRIDAY	SAT	
3/17	3/18	3/19	3/20	3/21	3/22		
STORE	FACILITY	CONTRACTOR					
				<p><b>RECYCLE ROOM CLOSED AT END OF DAY</b></p> <p>PM INSTALL POWER FOR TEMP MACHINES DISCONNECT DUCT FROM MACHINES (SAVE CONNECTIONS) REMOVE SINK/FAUCET DEMO PAPER TOWELL DISP REMOVE/SAVE SOAP DISP REMOVE/SAVE BUG ZAPPER DISXC/REMOVE/SAVE PLUG STRIP(S) DEMO OLD MARLITE DELIVER MATERIALS</p>	<p><b>8AM TOMRA TO</b> INSTALL TEMP MACHINES &amp; REMOVE OLD MACHINES <b>STORE TO CLEAN DEBRIS &amp; REMOVE TRASH BINS</b> INSTALL MARLITE PANELING &amp; MCCUE BUMPER</p>		
SUNDAY	MONDAY	TUESDAY	WEDNESDAY	THURSDAY	FRIDAY	SAT	
3/24	3/25	3/26	3/27	3/28	3/29		
STORE	FACILITY	CONTRACTOR					
<p>REMOVE/REPLAVE WHITE FRP AS NECESSARY COMPLETE MARLITE PANELING &amp; MCCUE BUMPER</p>	<p><b>EPOXY INSTALLATION</b></p> <hr/> <p style="text-align: center;"><b>SUNDAY 4/01</b></p> <p>REMOVE TEMP POWER REATTACH DUCT TO NEW MACHINES INSTALL STAINLESS CORNERS</p>	<p><b>COMPLETE EPOXY INSTALLATION</b></p>	<p>PAINT WALLS (SW 6203 SPARE WHITE) PAINT DOOR FRAME (SW 7046 ANONYMOUS)</p>	<p>INSTALL SINK/FAUCET INSTALL HAND DRYER INSTALL SOAP DISPENSER INSTALL VINYL BASE CLEAN CEILING TILE &amp; DIFFUSERS</p>	<p><b>8AM TOMRA TO</b> INSTALL NEW MACHINES &amp; REMOVE TEMP MACHINES BY END OF DAY <b>RECYCLE ROOM REOPENS</b></p>		



Kragen 455  
Roseville

