

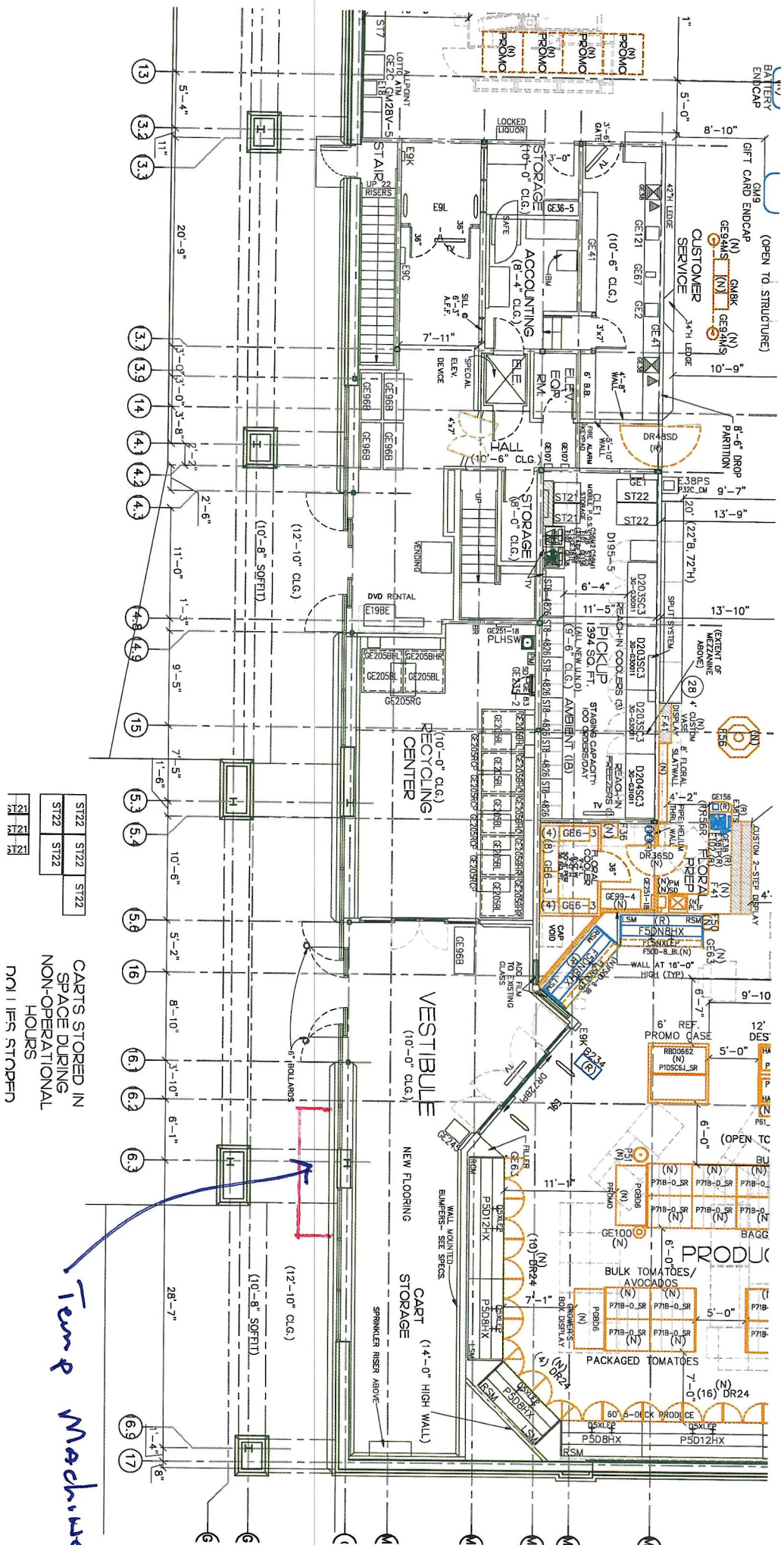
# KROGER 444 HARTLAND - TOMRA

PROJECT MANAGER:

GENERAL CONTRACTOR: TONY AND SONS, INC

SUNDAY	MONDAY	TUESDAY	WEDNESDAY	THURSDAY	FRIDAY	SAT
3/31	4/1	4/2	4/3	4/4	4/5	
STORE	FACILITY	CONTRACTOR				
	<p><b>RECYCLE ROOM CLOSED AT END OF DAY</b></p> <p>PM INSTALL POWER FOR TEMP MACHINES DISCONNECT DUCT FROM MACHINES IN 3 PLACES (SAVE CONNECTIONS) REMOVE SINK/FAUCET DEMO PAPER TOWELL DISP REMOVE/SAVE SOAP DISP REMOVE/SAVE BUG ZAPPER REMOVE MOP HOLDERS (SAVE FOR REINSTALLO DEMO OLD MARLITE DELIVER MATERIALS</p>	<p>8AM <b>TOMRA</b> TO INSTALL TEMP MACHINES &amp; REMOVE OLD MACHINES <b>STORE TO CLEAN DEBRIS &amp; REMOVE TRASH BINS</b> <b>STORE TO EMPTY/ CLEAN STORAGE ROOM OF SUPPLIES &amp; SHELVING</b> <b>VERIFY OPENINGS FOR NEW MACHINES</b> (CUT/ADJUST AS NECESSARY) INSTALL MARLITE PANELING &amp; MCCUE BUMPER</p>	<p>REMOVE/REPLACE WHITE FRP AS NECESSARY COMPLETE MARLITE PANELING &amp; MCCUE BUMPER</p>	<p><b>AM EPOXY INSTALLATION</b> (INCLUDING TOP OF CURBS)</p>	<p><b>AM COMPLETE EPOXY INSTALLATION</b></p>	<p><b>EPOXY CURE</b></p>
SUNDAY	MONDAY	TUESDAY	WEDNESDAY	THURSDAY	FRIDAY	SAT
4/7	4/8	4/9	4/10	4/11	4/12	
STORE	FACILITY	CONTRACTOR				
<p>PAINT WALLS (SW 6203 SPARE WHITE)</p>	<p>INSTALL NEW SINK/FAUCET INSTALL HAND DRYER INSTALL SOAP DISPENSER INSTALL VINYL BASE INSTALL BUG ZAPPER INSTALL MOP HOLDERS</p>	<p>8AM <b>TOMRA</b> TO INSTALL NEW MACHINES &amp; REMOVE TEMP MACHINES BY END OF DAY <b>RECYCLE ROOM REOPENS</b></p>	<p>REMOVE TEMP POWER REATTACH DUCT TO NEW MACHINES</p>			

Kroger 444 - flat land



Temp Machines

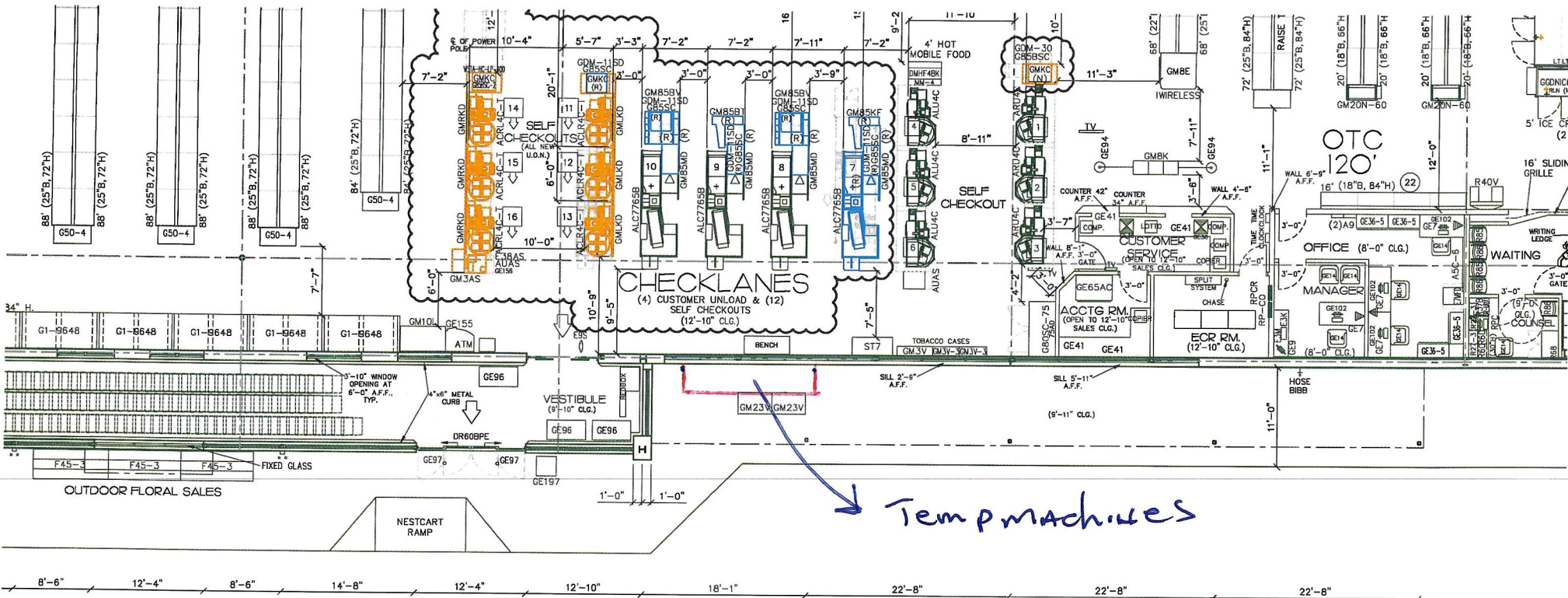
CARTS STORED IN SPACE DURING NON-OPERATIONAL HOURS  
P.M. | IFS STOPPED

# KROGER 577 DUNDEE - TOMRA

PROJECT MANAGER:

GENERAL CONTRACTOR: TONY AND SONS, INC

SUNDAY	MONDAY	TUESDAY	WEDNESDAY	THURSDAY	FRIDAY	SAT
4/7	4/8	4/9	4/10	4/11	4/12	
STORE	FACILITY	CONTRACTOR				
		<p><b>RECYCLE ROOM CLOSED AT END OF DAY</b></p> <p>PM INSTALL POWER FOR TEMP MACHINES DISCONNECT DUCT FROM MACHINES IN 3 PLACES (SAVE CONNECTIONS) DEMO PAPER TOWELL DISP REMOVE/SAVE SOAP DISP DEMO OLD VINYL BASE DELIVER MATERIALS</p>	<p>8AM <b>TOMRA</b> TO INSTALL TEMP MACHINES &amp; REMOVE OLD MACHINES</p> <p><b>STORE TO CLEAN DEBRIS &amp; REMOVE TRASH BINS</b></p> <p>VERIFY OPENINGS FOR NEW MACHINES &amp; ADJUST AS NECESSARY</p>	<p>MEASURE/ORDER STAINLESS CORNERS (AROUND MACHINE OPENINGS, CORNERS &amp; TOP OF STAINLESS CURB) REMOVE/REPLACE WHITE FRP AS NECESSARY INSTALL MARLITE PANELING &amp; MCCUE BUMPER</p>	<p>COMPLETE MARLITE PANELING &amp; MCCUE BUMPER</p>	
SUNDAY	MONDAY	TUESDAY	WEDNESDAY	THURSDAY	FRIDAY	SAT
4/14	4/15	4/16	4/17	4/18	4/19	
STORE	FACILITY	CONTRACTOR				
	<p>PAINT WALLS (SW 6203 SPARE WHITE) DOOR FRAME (SW 7046 ANONYMOUS)</p>	<p>INSTALL HAND DRYER INSTALL SOAP DISPENSER INSTALL VINYL BASE REPLACE CEILING TILE WITH NEW</p>	<p>8AM <b>TOMRA</b> TO INSTALL NEW MACHINES &amp; REMOVE TEMP MACHINES BY END OF DAY</p> <p><b>RECYCLE ROOM REOPENS</b></p>	<p>REMOVE TEMP POWER REATTACH DUCT TO NEW MACHINES INSTALL STAINLESS CORNERS IONSTALL NEW STAINLESS ON TOP OF CURBS</p>		



Temp machines

- 52 EXIST SUB FEEDER ELECTRIC PANEL (CONTRACTOR SUPPLY)
  - 64-4 EXIST 4' PROTECTIVE POST (BACKGROUND) (CONTRACTOR SUPPLY)
  - 64-4 EXIST 4' PROTECTIVE POST (BACKGROUND) (CONTRACTOR SUPPLY)
  - 64-6 EXIST 6' PROTECTIVE POST (BACKGROUND) (CONTRACTOR SUPPLY)
  - 80 EXIST EYE WASH STATION (CONTRACTOR SUPPLY)
- 
- 95-5 NEW CLICK LIST SOLID BACK HOT HOLDING CABINET
  - 94B EXIST OVEN ROASTED CHICKEN UNLOAD CART
  - 94 EXIST CHICKEN LANDING TABLE
  - 99B EXIST COMPLETE CHICKEN TENDERS BREADING CART
  - 95 EXIST AUTOMATIC SLICER
  - 80 EXIST CHICKEN BOX DOLLY
  - 82-6 EXIST 6 SHELF DELI BACK STOCK CART
  - 1 EXIST CUSTOM MILLWORK COUNTER (CONTRACTOR SUPPLY)
  - 03SC3 NEW 3 DOOR DELI STORAGE REFRIGERATOR (SELF-CONTAINED)
  - 04SC2 NEW 2 DOOR DELI STORAGE FREEZER (SELF-CONTAINED)

- FLORAL
- 1 F10 EXIST HELIUM TANK CABINET
  - 1 F36 EXIST FLORAL WATERING SYSTEM (12 GALLON PORTABLE)
  - 1 F41 EXIST CUSTOM MILLWORK COUNTER (CONTRACTOR SUPPLY)
  - 3 F43-3 EXIST 3 TIER OUTDOOR FLORAL DISPLAY
  - 3 F46 EXIST NESTING TABLE SET
  - 2 F50B-6 EXIST 9' BALLON DISPLAY FIXTURE
  - 1 F55V EXIST POTTING SOIL RACK
  - 1 F9 EXIST HELIUM TANK (VENDOR SUPPLY)
- GENERAL
- 1 GE11C EXIST DEPARTMENT HEAD COMPUTER WORKSTATION
  - 2 GE11 EXIST RECEIVING DESK - WALL
  - 1 GE155 EXIST COIN COUNTER (VENDOR SUPPLY)
  - 2 GE183 EXIST SANITIZER AND HOSE CABINET

- 1 GB5BSC-2 NEW CHECKSTAND REFRIGERATED MERCHANDISER
  - 4 GB5IEH EXIST GLASS DOOR ISLAND GROCERY END PANEL
  - 8 GB5DILT1SHI EXIST 18' GLASS DOOR ISLAND LOW TEMP GROCERY (5 DOORS)
  - 4 GB5DILT1FHI EXIST 9' GLASS DOOR ISLAND LOW TEMP GROCERY (3 DOORS)
  - 8 GB5NIC12HI EXIST 12' NARROW GLASS DOOR ICE CREAM TEMP GROCERY (5 DOORS)
  - 1 GB5NIC6HI EXIST 6' NARROW GLASS DOOR ICE CREAM TEMP GROCERY (2 DOORS)
  - 4 GB5NIC6PHI EXIST 6' NARROW GLASS DOOR GROCERY FRONT (2 DOORS)
  - 2 GB5NIC1HI EXIST NARROW GLASS DOOR GROCERY LEFT END PANEL
  - 2 GB5NICREHI EXIST NARROW GLASS DOOR GROCERY RIGHT END PANEL
- MEAT
- 1 MSB12HX EXIST 12' FIVE-DECK DELI MEAT CASE
  - 1 MSB15HX EXIST FIVE-DECK DELI MEAT CASE LEFT SLAB MIRROR END
  - 1 MSB18HX EXIST FIVE-DECK DELI MEAT CASE RIGHT SLAB MIRROR END
  - 1 MGN1N1HI EXIST NARROW GLASS DOOR MEAT LEFT END PANEL
  - 1 MGN1N1PHI EXIST 10' NARROW GLASS DOOR LOW TEMP MEAT (4 DOORS)
  - 1 MGN1N1RHI EXIST NARROW GLASS DOOR MEAT RIGHT END PANEL

- 3 RB6 EXIST WAITING AREA CHAIR WITHOUT ARM
  - 1 RB7 EXIST RECONSTITUTION WATER DISPENSER
  - 3 RIS EXIST RX IMAGE SCANNER
  - 7 RPC EXIST RX EASYFILL PRN PC & 17" LCD
  - 1 RPP EXIST PEN PAD FOR RX DRIVE THRU/WALK
  - 3 RTP EXIST RX THERMAL PRINTER (BACKTAGS & PRODUCE)
- PRODUCE
- 1 P10 EXIST PRODUCE CART
  - 1 P21E EXIST ENERGY EFFICIENT 3-ROLL WRAPPE
  - 1 P31T EXIST SERVICE SCALE/UPC PRINTER (TCL)
  - 3 P32L-CH NEW PRODUCE SCALE CABINET (COOKA H)
  - 3 P32T EXIST PRODUCE TOP LOADING SCALE WITH
  - 1 P32T HELD PRODUCE TOP LOADING SCALE WITH
  - 2 P33I EXIST ICED ORCHARD BIN
  - 7 P33T EXIST ORCHARD BIN SIDE TABLE (UPSCALE)
  - 14 P33 EXIST 3' x 3' ORCHARD BIN (UPSCALE)

Kroger 577 Dundee

# KROGER 714 DAVISON - TOMRA

PROJECT MANAGER:

GENERAL CONTRACTOR: TONY AND SONS, INC

SUNDAY	MONDAY	TUESDAY	WEDNESDAY	THURSDAY	FRIDAY	SAT
4/21	4/22	4/23	4/24	4/25	4/26	

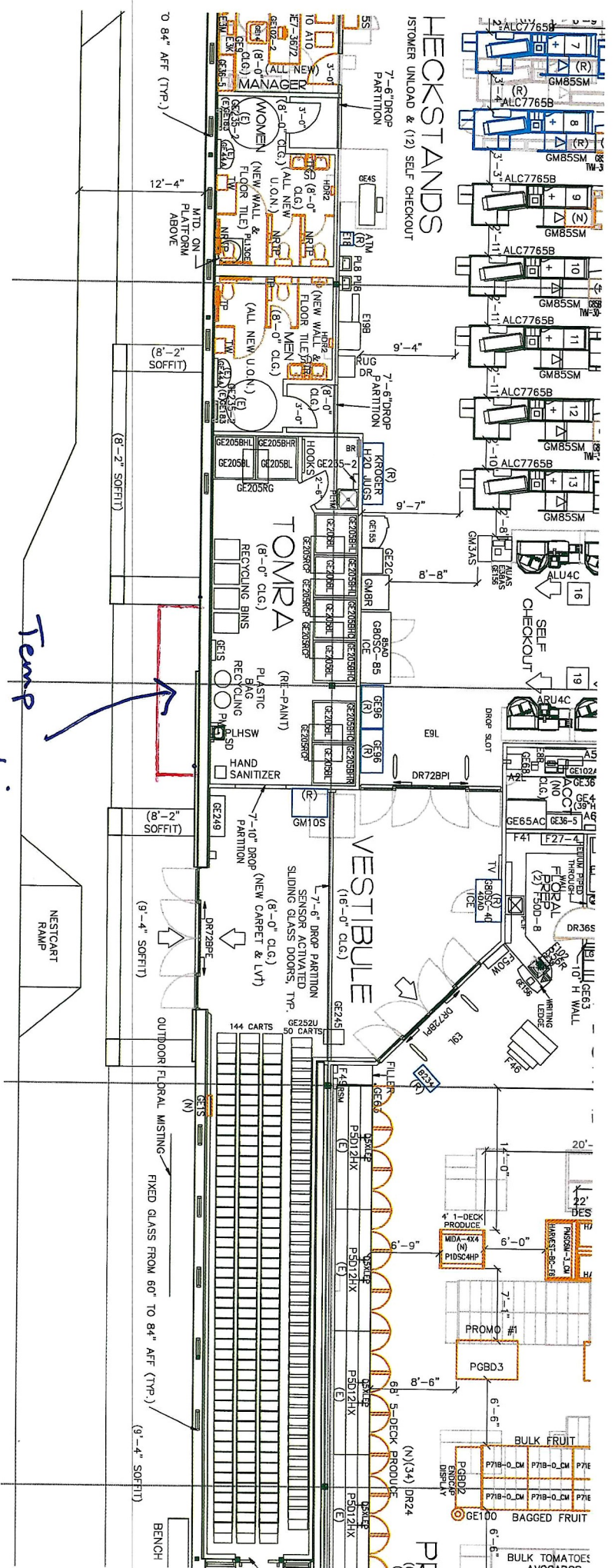
STORE	FACILITY	CONTRACTOR				
<p><b>RECYCLE ROOM CLOSED AT END OF DAY</b>                      PM INSTALL POWER FOR TEMP MACHINES                      DISCONNECT DUCT FROM MACHINES (SAVE CONNECTIONS)                      REMOVE SINK/FAUCET                      DEMO PAPER TOWELL DISP                      REMOVE/SAVE SOAP DISP                      REMOVE/SAVE BUG ZAPPER                      DEMO OLD MARLITE                      DELIVER MATERIALS</p>	<p><b>8AM TOMRA</b> TO INSTALL TEMP MACHINES &amp; REMOVE OLD MACHINES  <b>STORE TO CLEAN DEBRIS &amp; REMOVE TRASH BINS</b>  <b>STORE TO EMPTY/ CLEAN CLEANING CLOSET OF SUPPLIES &amp; SHELVING</b>  <b>VERIFY OPENINGS FOR NEW MACHINES</b> (CUT ADJUST AS NECESSARY)                      INSTALL MARLITE PANELING &amp; MCCUE BUMPER                      DEMO VINYL BASE IN STORAGE CLOSET</p>	<p>REMOVE/REPLACE WHITE FRP AS NECESSARY                      COMPLETE MARLITE PANELING &amp; MCCUE BUMPER</p>	<p>PAINT WALLS (SW 6203 SPARE WHITE)                      PAINT DOORS &amp; FRAMES (SW 7046 ANONYMOUS)</p>	<p><b>EPOXY INSTALLATION INCLUDING EPOXY COVE BASE</b></p>	<p><b>COMPLETE EPOXY INSTALLATION</b></p>	<p><b>EPOXY CURE</b></p>

SUNDAY	MONDAY	TUESDAY	WEDNESDAY	THURSDAY	FRIDAY	SAT
4/28	4/29	4/30	5/1	5/2	5/3	

STORE	FACILITY	CONTRACTOR				
<p>INSTALL NEW SINK/FAUCET                      INSTALL HAND DRYER                      INSTALL BUG ZAPPER                      INSTALL VINYL BASE IN STORAGE CLOSET</p>	<p><b>8AM TOMRA</b> TO INSTALL NEW MACHINES &amp; REMOVE TEMP MACHINES BY END OF DAY  <b>RECYCLE ROOM REOPENS</b></p>	<p>REMOVE TEMP POWER                      REATTACH DUCT TO NEW MACHINES                      INSTALL SOAP DISPENSER                      INSTALL ANY STAINLESS CORNERS NEEDED</p>				

Keagen 714  
DAVISON

Temp  
Machines

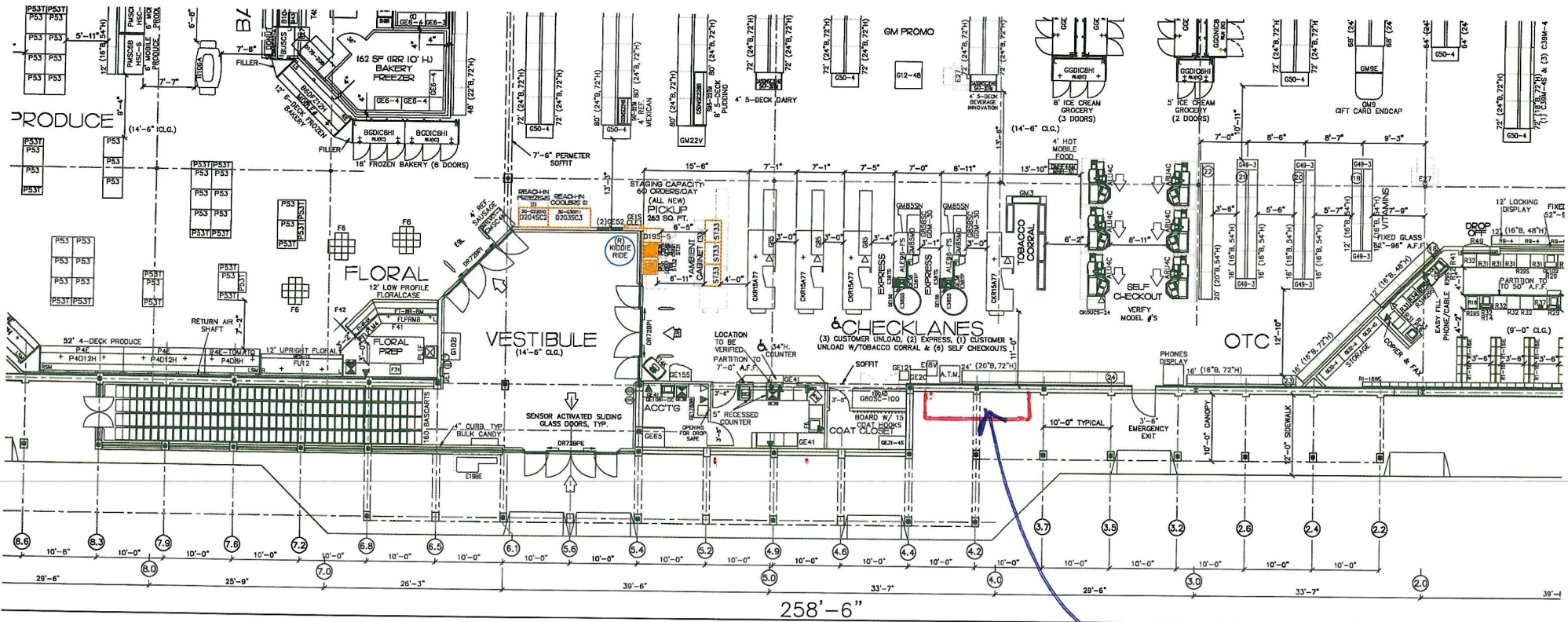


# KROGER 715 PORT HURON - TOMRA

PROJECT MANAGER:

GENERAL CONTRACTOR: TONY AND SONS, INC

SUNDAY	MONDAY	TUESDAY	WEDNESDAY	THURSDAY	FRIDAY	SAT
5/5	5/6	5/7	5/8	5/9	5/10	
STORE	FACILITY	CONTRACTOR				
		<p><b>RECYCLE ROOM CLOSED AT END OF DAY</b></p> <p>PM INSTALL POWER FOR TEMP MACHINES DISCONNECT DUCT FROM MACHINES (SAVE CONNECTIONS) REMOVE SINK/FAUCET DEMO PAPER TOWELL DISP REMOVE/SAVE SOAP DISP REMOVE/SAVE BUG ZAPPER DEMO OLD MARLITE &amp; VINYL BASE DELIVER MATERIALS</p>	<p>8AM TOMRA TO INSTALL TEMP MACHINES &amp; REMOVE OLD MACHINES</p> <p><b>STORE TO CLEAN DEBRIS &amp; REMOVE TRASH BINS</b></p> <p>VERIFY OPENINGS/ADJUST AS NECESSARY INSTALL MARLITE PANELING &amp; MCCUE BUMPER</p>	<p><b>EPOXY INSTALLATION INCLUDING BEHIND FRONT OF MACHINES</b> (BACK ROOM)</p>	<p><b>COMPLETE EPOXY INSTALLATION</b></p>	<p><b>EPOXY CURE</b></p>
SUNDAY	MONDAY	TUESDAY	WEDNESDAY	THURSDAY	FRIDAY	SAT
5/12	5/13	5/14	5/15	5/16	5/17	
STORE	FACILITY	CONTRACTOR				
<p>COMPLETE MARLITE PANELING &amp; MCCUE BUMPER</p>	<p>PAINT WALLS (SW 6203 SPARE WHITE) PAINT DOOR &amp; FRAME (SW 7046 ANONYMOUS)</p>	<p>INSTALL SINK/FAUCET INSTALL HAND DRYER INSTALL SOAP DISPENSER INSTALL BUG ZAPPER INSTALL VINYL BASE</p>	<p>8AM TOMRA TO INSTALL NEW MACHINES &amp; REMOVE TEMP MACHINES BY END OF DAY</p> <p><b>RECYCLE ROOM REOPENS</b></p>	<p>REMOVE TEMP POWER REATTACH DUCT TO NEW MACHINES INSTALL STAINLESS CORNERS</p>		



Temp machines

KROGER 715 PORT HURON